



CONCEPT BATH

# COMPANY PROFILE

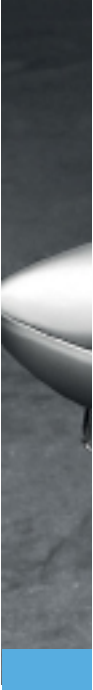


---

We offer more  
creative & efficient  
solution more than  
what you can think.

---

## ABOUT US



*Water is the most important natural resource available to mankind today, and is rapidly becoming limited, which makes saving water critical to the future of our environment.*

---

At Concept Bath FZE, we are totally dedicated to preserving water and believe in following sustainable water policies.

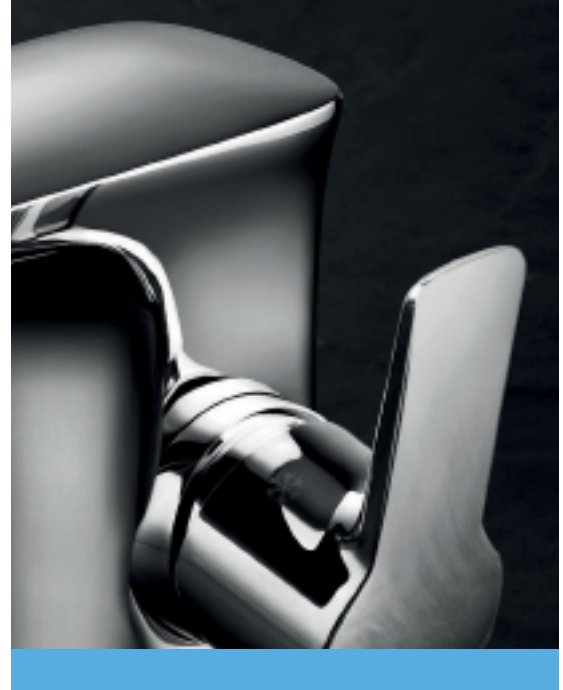
Across the world saving water is becoming a major concern, not simply in the arid region of the planet, but elsewhere too.

Concept Bath FZE has been at the forefront of this key issue since 2003, having foreseen the problem with depleting water resources and has taken the lead in finding ways to cut water consumption.

The range of product both manufactured and distributed by Concept bath FZE, offer full and perfect bathroom sanitary ware shower rooms, steam and sauna rooms; normal and massage bathtubs as well as various stylish accessories to complete the perfect bathroom.

Concept Bath FZE is dedicated to continuous product development to bring products of the finest quality to its clients.

The research programs that are in place drive the products to not only meet but exceed international standards wherever possible. The testing processes are rigorous; on the raw material as well on the final products, and carried out regularly, to ensure product quality of the highest standard. All testing is done in house at the Group's quality control laboratories, all of which are fully equipped to implement test procedures in line with international standards.



This extensive testing and development not only delivers to the highest quality product to client, but also mean that the products are at the forefront of water conservation technology in line with the

## COMPANY OVERVIEW

---

### OUR VISION

Our vision is not only to conserve and protect the vital natural resource of fresh water through the use of our products, but also to help encourage and increase public awareness about water conservation.

Concept Bath FZE has adopted the Techno-Green Building drive to provide people with the fundamental knowledge of saving water techniques.

In addition, as a member of the U.S Green council Concept Bath FZE also meets the requirements of the (LEED) the leadership in energy and Environmental Design, Green Building rating System.

Concept Bath FZE ha achieved its vision by working in collaboration with the world's best designers, architects, suppliers in intelligence components manufacturers, with 'TUV', 'NSF', WATERMARKS', 'ACS', 'WRAS', 'CSTB', 'KIWA', Quality Assurance and certificates. This combined with the high level of control, enables Concept Bath to continue to develop and release new concepts and collections for kitchen and bathroom of the future which, in turn help to conserve precious water resources

---

## OUR MISION

Concept Bath has mission to redefine the bathroom as a comfortable, well design living space while achieving 40-60 percent of water saving compared to conventional building of the same size.

This mission is already well underway, with our valued clientele list including customers such as contracting companies, chain of international hotels, reliable and authorized distributors. Our products have been installed in residential building, villas and apartments. The strategic and convenient location of the company in Dubai 'Jebel Ali Free Zones enables Concept Bath FZE Dispatch products promptly to its main markets across the GCC, Middle East, North Africa USA and Europe. The location also offers Concept Bath FZE the opportunity to deliver outstanding after sales service.

---

## OUR VALUE

1

### *Innovation*

---

Research Develop And Custom Innovate Designs And Solutions To Satisfy Our Customers Need's.

2

### *Teamwork*

---

Talen Win Games, But Teamwork and Intelligence Wins Championships.

3

### *Integrity*

---

There Are No Shortcuts To Success And There Is No Real Success Without Integrity.

4

### *Passionate*

---

Our Passion Goes Beyond Simply Offering Unique Products For The Bath.  
We Believe In Offering Our Customers Products With Personality That Improve People's Lives And Their Environment.

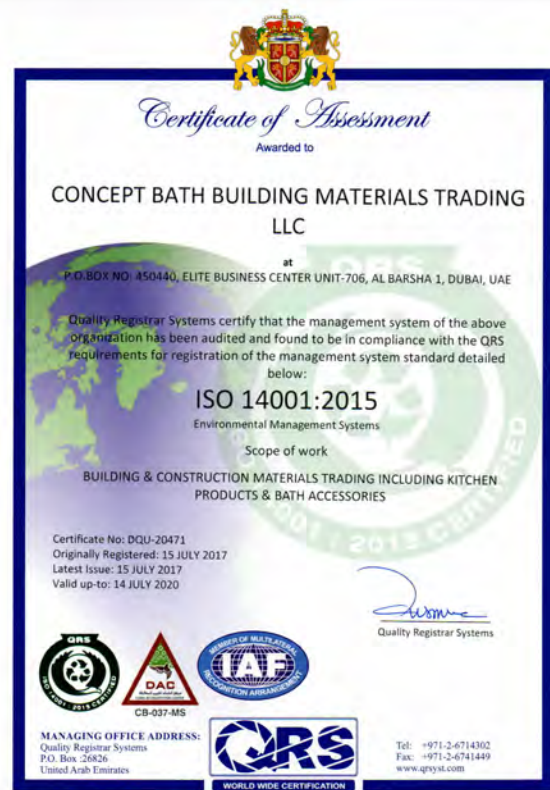
# Our Certificates

ISO 9001:2015

ISO 14001:2015



QUALITY MANAGEMENT SYSTEMS



ENVIRONMENTAL MANAGEMENT SYSTEMS

# Our Certificates

OHSAS 18001:2007



OCCUPATIONAL HEALTH AND SAFETY MANAGEMENT SYSTEMS

# Our Certificates

*USGBC National Membership*

*Member ID: 2340044316023751*

*Member Since: July 24, 2008*

---



## **ABOUT USGBC (U.S. Green Building Council)**

The U.S. Green Building Council (USGBC) is committed to transforming the way our buildings are designed, constructed and operated through LEED — the top third-party verification system for sustainable structures around the world.

Every day USGBC is helping advance spaces that are better for the environment and healthier for us to live, work and play in. Through our community network, continuous collaboration with industry experts, market research publications and LEED professional credentials, USGBC remains a key driving force in the green building sector.



# Concept Bath Manufacture's certificate of conformity Sus- tainability Principles and Guidelines

**CERTIFICATE NO: CBD-SD-217446**

**DATE: 08-01-2014**

Herewith, CONCEPT BATH TRADING FZE, and their allied partners and suppliers, declare that  
Our Products are manufactured in accordance with the common and valid regulations and technical guide  
Lines,

1. Brass:

In accordance with DIN EN 12502 / DIN 50930 Part 6/EN12164 and as per Recommendation Par le German Federal Office Environ-  
ment dated 23rd April 13

IN addition: dissolution of heavy metals in accordance with NKB Product Rules 4, 1986 items 2.32

2. Standards for testing of sanitary taps: In accordance with EN 817 / En 1111

3. Surface:

In accordance with DIN EN 12540

4. Corrosion resistance:

In accordance with DIN EN

5. Cartridges:

(By Sedal, Spain) Certified according: KTW, WRC, NSF (By Kerox hungry) certified according: KTW, WRC, NSF Or equivalent.

6. Ceramic head parts:

Flush, Germany or equivalent certified according: KTW, WRC, NSF

7. Thermostatic cartridges:

Vernet, Franchkreich; or equivalent in accordance with DIN EN 1111

**TOP OF THE LINE OEM SERVICES**

For More Than 10 Years,  
We Have Been Providing OEM Services To Leading Factories Around The World  
Our Services Included But Are Not Limited To Product Design And Development,  
Custom Products Engineering And Parts Manufacturing  
Quality Control And Dedicated Customer And After Sales Service



**WE ALWAYS TRY TO  
GIVE MORE VALUE &  
INNOVATION TO THE  
BUSINESS NEEDS.**

**1** CUSTOM DESIGN  
AND PRODUCT DEVELOPMENT

**2** ADVANCED MANUFACTURING  
TECHNOLOGY

# Line of Business



We Believe In Quality As The Chain Is Only As Strong As Its Weakest Link.  
It Is Important For The Manufacturing Process To Be Quality Controlled From The Smallest Screw Or Nut To Its Largest Body.  
Only Then You Can Be Sure That Your Structure Will Stand The Test Of Time.



*Supplying of Sanitary Ware to Projects in The GCC*

With More Than 12 Years Of Experience In The Gulf Region; We Have Successfully Completed Various Types Of Projects From All The Construction Sector Types Such As Villas, Offices, Residential Building And Towers, Serviced Apartments And Hotels



**1** A WIDE RANGE OF BATHROOM MIXERS AND ACCESSORIESV

**2** RAIN SHOWERS AND SHOWER SYSTEM

# Line of Business



**3** COMPLETE COLLECTION OF BATHROOM SANITARY WARE

SHOWER ENCLOSURES AND SHOWER DOORS WITH CUSTOM SIZES AND DESIGNS. EQUIPPED WITH LATEST ACCESSORIES DESIGNS AND TEMPERED GLASS.



**4** SHOWER ENCLOSURE & SHOWER DOORS



LED LIGHTING



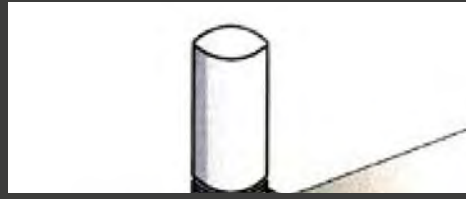
STAINLESS STEEL PUBLIC  
AREAS BATHROOM AC-  
CESSORIES AND MIRRORS



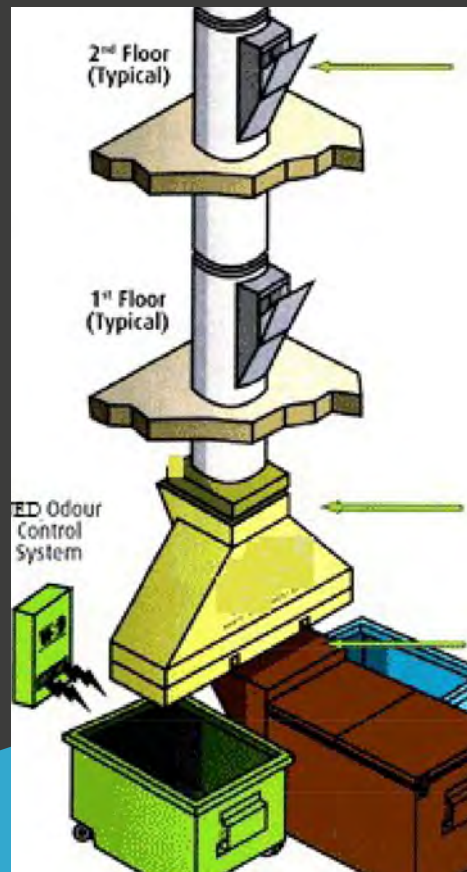
STAINLESS STEEL KITCHEN  
RANGE HOOD AND KITCHEN  
WARE



STAINLESS STEEL KITCHEN  
SINKS



# LINEN & GARBAGE CHUTE SYSTEM





GERMAN MIXERS



TURKISH SINKS



ELITE LED SOLUTIONS



HYGIENIC SOLUTIONS AT WORK

STAINLESS STEEL PUBLIC  
WASHROOM ACCESSORIES  
ADA COMPLIANCE





**JohnsonSuisse**  
Bathroom Solutions

ROCA GROUP

**LAPINO**

CERAMIC TURKEY



MINRAL STONE BATHTUB



KITCHEN HOODS

**mora**<sup>®</sup> ARMATUR

by FM MATTSSON  
MIXERS & FAUCETS

**HABITAT** CERAMICS  
Porcelain & Ceramic Tiles

CERAMIC & PORCELAIN TILES

FROM TURKEY PORTUGAL AND SPAIN

# Our Projects

## SOME OF OUR SUCCESSFUL WORKS

---



**Client : Emirates Air Lines**

---

**Contractor : El-Seif**

---

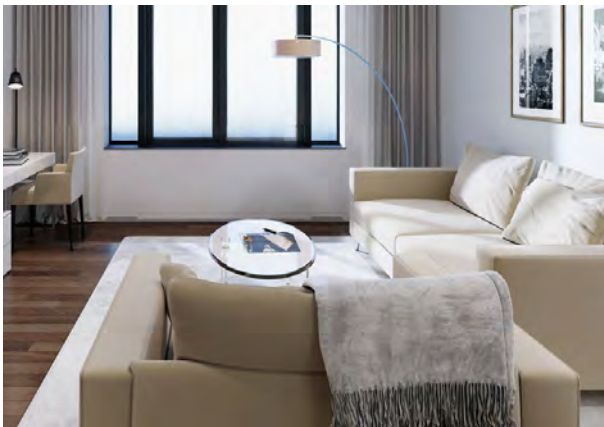
**Status : Completed**

---



### Meydan 1500 Villas Project

Mohammed bin Rashid City – District Eleven, a collection of 1,500 four-bedroom semi-detached villas spanning a total of 450,000 square metres, will be let to Emirates Airline pilots.



**Client : Marriot**

**Contractor : AlFuttaim Carillion**

**Status : Completed**

## Marriot La Ville Hotel & Suites CITY WALK Dubai

Taking its inspiration from the commercial, aesthetic and architectural elements of New York, the development brings the artistic mastery of early 20th century Manhattan-style architecture to new Dubai. Sleek contours and floor-to-ceiling glass shape its spectacular facade. The development comprises 276 luxury units, including studios, one, two and three bedroom apartments and fabulous penthouses.

# Our Projects

## SOME OF OUR SUCCESSFUL WORKS

---



**Client : Select Properties**

---

**Contractor : GCC**

---

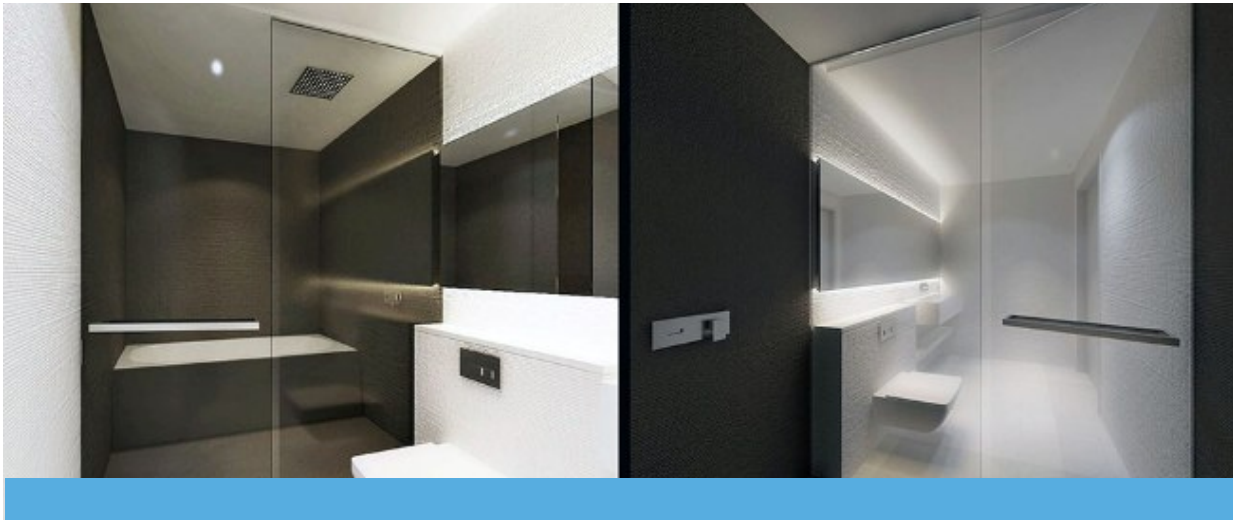
**Status : Completed**

---



### Intercontinental Dubai Marina

Located amidst Dubai Marina and within 10 minutes walking distance from hot spots like Jumeirah Beach Walk, Dubai Marina Mall and a tram station, InterContinental® Dubai Marina is the place to see and be seen. Natural light fills artfully designed interiors revealing a collection of contemporary sculptures. A Michelin-starred chef and expert sommeliers attract discerning diners to our restaurants and bars. Featuring its own Health Club, Spa and outdoor pool, the hotel is a destination in itself.



**Client : Select Properties**

**Contractor : CRC**

**Status : Completed**

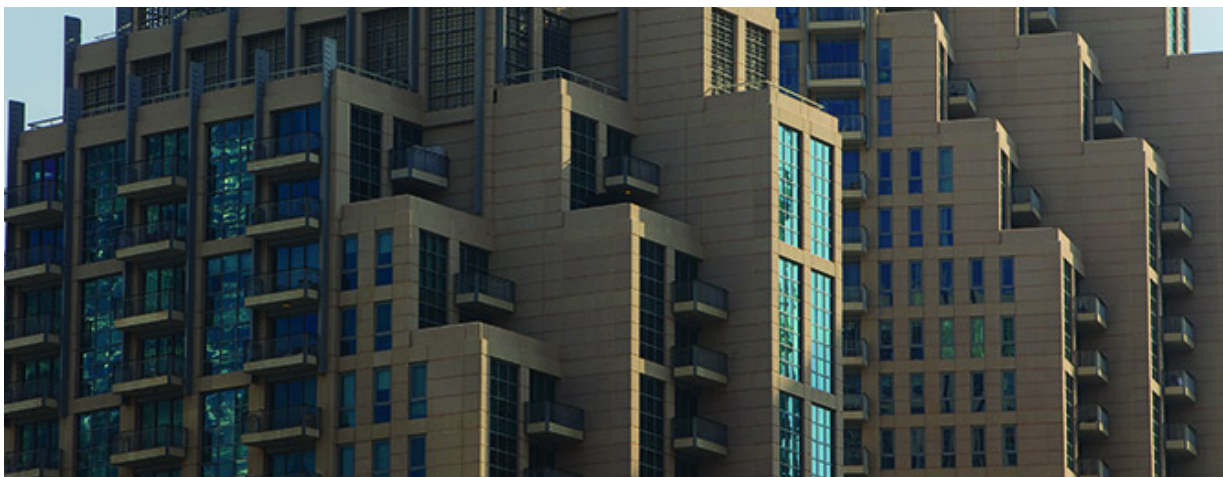
## West Avenue Dubai Marina

Taking its inspiration from the commercial, aesthetic and architectural elements of New York, the development brings the artistic mastery of early 20th century Manhattan-style architecture to new Dubai. Sleek contours and floor-to-ceiling glass shape its spectacular facade. The development comprises 276 luxury units, including studios, one, two and three bedroom apartments and fabulous penthouses.

# Our Projects

## SOME OF OUR SUCCESSFUL WORKS

---



**Client : EMAAR PROPERTIES**

---

**Contractor : ARABTEC**

---

**Status : Completed**

---



### Standpoint Towers Downtown

OFFERING A SURPLUS OF DESIGN PERSPECTIVES, STANDPOINT FUSES CONTEMPORARY EXTERIORS WITH CLASSIC INTERIORS. Located on Mohammed Bin Rashid Boulevard, a bustling thoroughfare lined with retail outlets and vibrant cafes, the twin Standpoint towers are situated in close proximity to Burj Khalifa, the world's tallest building. Designed by international architects Smallwood, Reynolds, Stewart and Stewart, Standpoint features studios, one, two, and three-bedroom apartments with a wide range of amenities on its podium level. Standpoint provides residents easy access to the varied lifestyle offerings in Downtown Dubai, including The Dubai Mall and Souk Al Bahar, as well as the world-class hotels.



**Client : Dubai Select**

**Type : GCC**

**Status : Completed**

## Botanica Tower Dubai Marina

### WATERFRONT LIVING IN A UNIQUE DEVELOPMENT

Home to a tranquil oasis in the heart of the city, Botanica is a development like no other. It commands an excellent location between three five-star hotels and Dubai Marina. A striking residential tower comprising the finest apartments, villas and penthouses. And on the 27th floor lies a Dubai first – a tropical botanical sky garden. The only private residence in the city that lets tenants take in the breathtaking Dubai skyline with such serenity.

# Our Projects

## SOME OF OUR SUCCESSFUL WORKS

---



**Client : Ajman Rural Office**

---

**Contractor : Canadian Cons.**

---

**Status : Completed**

---



City Towers Ajman Downtown





**Client : Al Dar**

---

**Contractor : AFC**

---

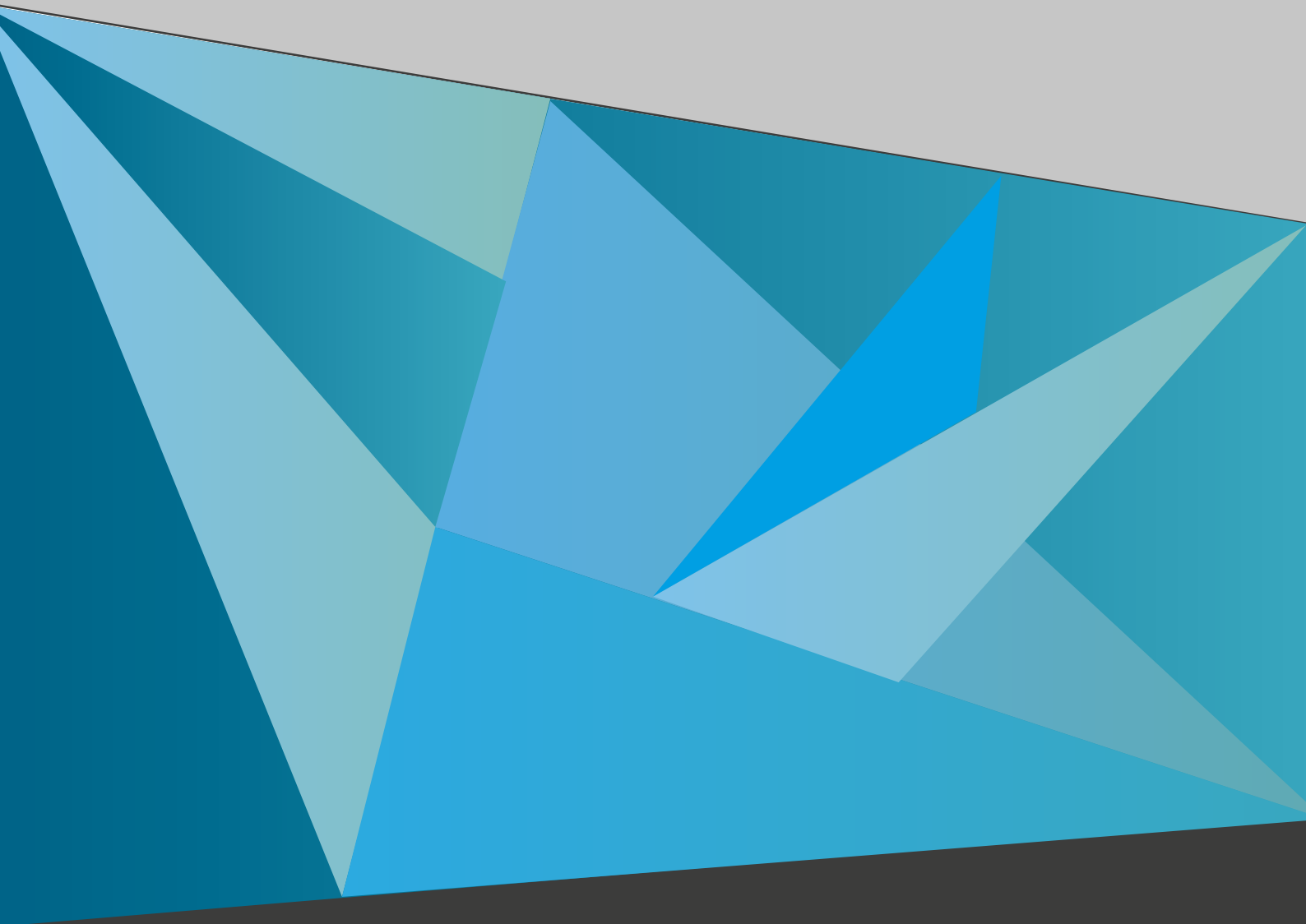
**Status : Completed**

---

AL RAHA BEACH DEVELOPMENT - ABU DHABI



CONCEPT BATH



 Email

---

info@concept-bath.com  
zarka@inbox.as  
www.concept-bath.com

 Phone

---

P : + 971 (04) 347 2700  
M: +971 (50) 64 55878  
F : +971 (04) 347 6100

 Address

---

706, Elite Business Center,  
Al Barsha, Dubai, UAE