

101010101010101  
001010101010101  
101010101010101  
110101002010101  
111101011010110111  
1010101010101  
111110010101111101101  
1011010111  
1010110101010101  
01100111110101  
11111010101010101  
111010101010101

- SHOW BUSINESS
- NETWORK
- MUSIC
- CINEMA
- BUSINESS/FINANCE
- WORLD NEWS

digital printing



H  
CTS  
GES

▶ VT201608-A

111011011010110 11111 101011011010110

- INTERNET
- LIVE CHAT
- MEDIA
- PHOTO
- SHOP

10101101101010110 10101101101010110



**VENUS** TILES®  
www.venustiles.com.my



CONCEPT BATH

PRODUCT CATALOGUE

- SELECT CATEGORIES
- CULTURE
- ECONOMIC
- FINANCE
- BUSINESS
- MEDIA
- PEOPLE
- CREATIVE
- TUTORIALS
- INVESTMENT
- NETWORKING

**Since the colour reproduction of this printed piece might vary slightly from the actual final tile colour, final selection should be made from sample tiles.**

**Venus Ceramic Industry Sdn. Bhd. reserves the right to amend the colour range or specifications of tiles at any time and without notice.**

company profile	<b>04</b>
digital printing tiles	<b>06</b>
nano technology polished tiles	<b>14</b>
full bodied tiles	<b>22</b>
homogeneous tiles	<b>26</b>
porcelain tiles	<b>32</b>
ceramic tiles	<b>44</b>
technical data	<b>58</b>
location & map	<b>62</b>
global sales network	<b>64</b>
contact information	<b>65</b>

# **INDEX**

# company profile

## WHO?

The premises from which Venus Ceramic Industry Sdn. Bhd. operates, covers a land area of 42.55 acres in Kluang, Johor. It had started production on 29th October 2005, currently has more than 600 employees on its payroll.

## WHY CHOOSING US?

In its relentless quest to enhance and ensure that its products meet the market expectation, Venus has used what is at this point of time the latest high tech manufacturing technique in the form of Nano Technology. As a result, the quality of its products has been enhanced to become more durable, ultra glossy and easy to clean.

## WHAT IS OUR VISION?

The company's vision is to be one of the leading ceramic tiles manufacture in Malaysia. Our manufacturing processes utilize latest equipments from the world renowned machinery company, SACMI of Italy, combined with latest manufacturing technology processes. Venus' products have proven to be reliable and of superior quality culminating in the company being awarded MS ISO 13006:2003 Quality Standards by SIRIM, Malaysia in September 2006, barely 11 months after operations. Besides, Venus gets certificate for China Compulsory Product Certification (CCC). Our products also received SIRIM certification in 2009 to contain the lowest toxicity level in the market.

## WHAT DO WE WANT TO ACHIEVE?

Currently, Venus export about 15% of the daily production capacity of 30,000 square meters to Asia Pacific and South Asia region, the remaining are sold locally, including well established developers in various prestigious housing and commercial projects. We want to become a leading reference in interior and exterior design as a specialist in high quality natural materials.

## HOW?

Our range of products include : ceramic tiles 30cm x 30cm and 40cm x 40cm; homogeneous tiles 30cm x 30cm, 30cm x 60cm and 60cm x 60cm; full bodied tiles 30cm x 60cm and 60cm x 60cm; porcelain tiles 30cm x 30cm and 30cm x 60cm ; and nano technology polished tiles 10cm x 60cm, 15cm x 60cm, 10cm x 80cm, 30cm x 30cm, 40cm x 40cm, 30cm x 60cm, 40cm x 80cm, 60cm x 60cm, and 80cm x 80cm. Varieties product surface includes super glossy, glossy, matte, marble effect and slate.

Venus tiles are made to perfection, Last A Lifetime.



SIRIM QAS International Product Certification

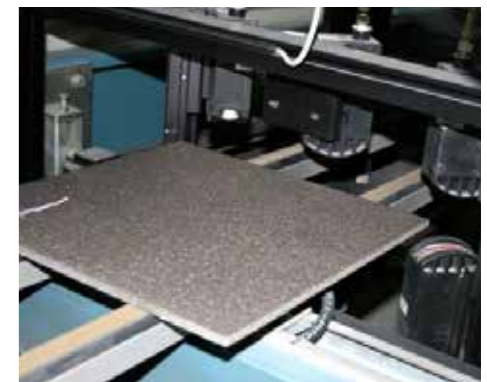


ISO Quality Management System ISO 9001 : 2008



Certificate For China Compulsory Product Certification

every piece  
made in  
MALAYSIA



Only The  
Best Will Do

by Oscar Wilde



D  
G  
P  
R  
N  
A  
T  
L  
G  
N



# brick stone

30 x 60cm



PA 36545  
30 x 60cm  
brick stone



PA 36546  
30 x 60cm  
brick stone



PA 36547  
30 x 60cm  
brick stone



PA 36548  
30 x 60cm  
brick stone

# classic marble

30 x 60cm



PA 36550  
30 x 60cm  
classic marble



PA 36552  
30 x 60cm  
classic marble

# digital printing

30 x 60cm



PA 36559  
30 x 60cm  
digital printing



PA 36560  
30 x 60cm  
digital printing



PA 36561  
30 x 60cm  
digital printing



PA 36562  
30 x 60cm  
digital printing  
(structure)

# timber

30 x 60cm

- 4 colours
- M matte finish
- V<sub>2</sub> shade variation
- digital printing
- non-rectify edge / tiles
- wall tiles
- floor tiles



PA 36563

PA 36564

PA 36565

PA 36566

digital printing

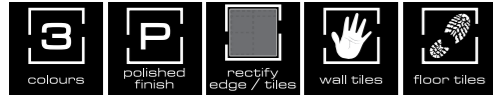


**Nano**  
Technology  
**Polished Tile**  
**HOME**  
Nothing come closer

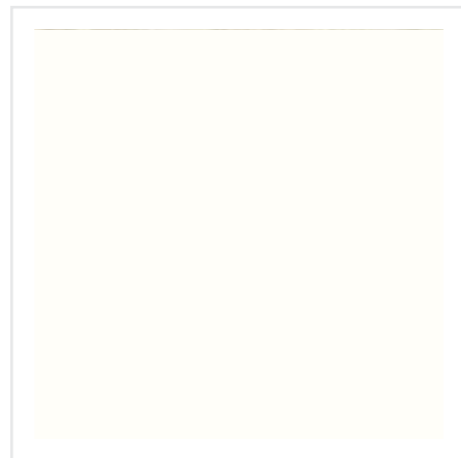


# nano technology polished

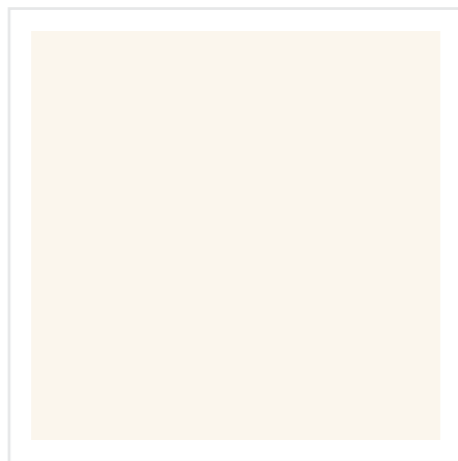
80 x 80cm, 60 x 60cm



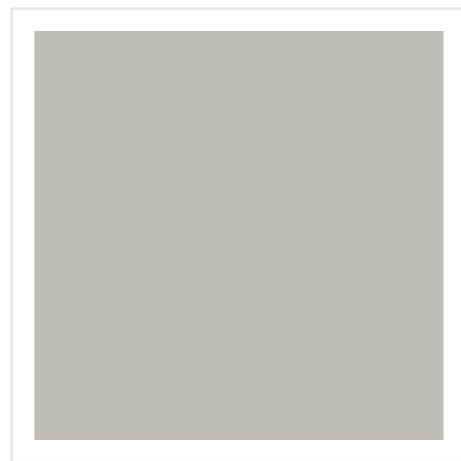
the  
pure  
L♥VE



**VHP 88001SGW / VHP 66001SGW**  
80 x 80cm / 60 x 60cm  
volakas



**VHP 88888 SG / VHP 66888 SG**  
80 x 80cm / 60 x 60cm  
ariston



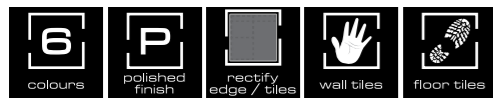
**VHP 66009 SG**  
60 x 60cm  
nano technology polished



	<b>10 x 80cm</b>		<b>15 x 60cm</b>
	<b>40 x 80cm</b>		<b>30 x 60cm</b>
	<b>40 x 40cm</b>		<b>30 x 30cm</b>
	<b>80 x 80cm</b>		<b>60 x 60cm</b>

# nano technology polished

80 x 80cm, 60 x 60cm



**VHP 88204 SG / VHP 66204 SG**  
80 x 80cm / 60 x 60cm  
wood marble



**VHP 88205 SG / VHP 66205 SG**  
80 x 80cm / 60 x 60cm  
wood marble



**VHP 66206 SG**  
60 x 60cm  
wood marble



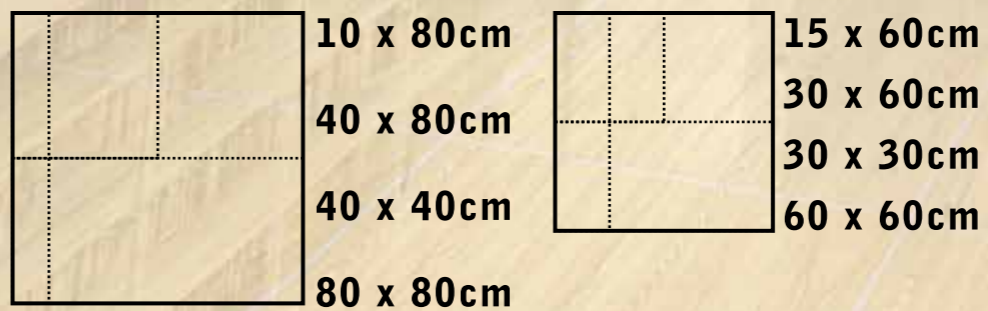
**VHP 66209 SG**  
60 x 60cm  
wood marble



**VHP 88210 SG / VHP 66210 SG**  
80 x 80cm / 60 x 60cm  
wood marble

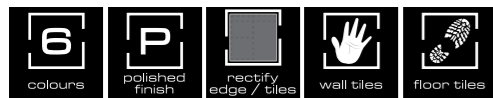


**VHP 66212 SG**  
60 x 60cm  
wood marble



# nano technology polished

80 x 80cm, 60 x 60cm



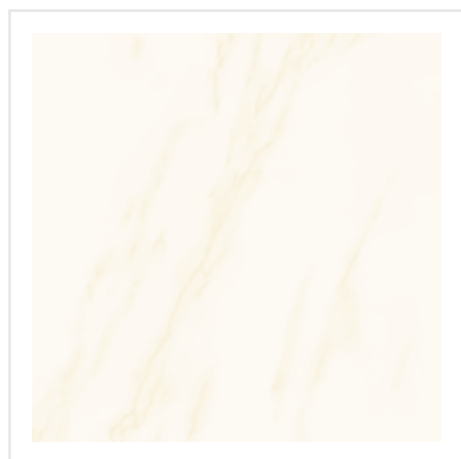
**VHP 66100 SG**  
60 x 60cm  
galaxy



**VHP 66200 SG**  
60 x 60cm  
botticino



**VHP 66213 SG**  
60 x 60cm  
nano technology polished



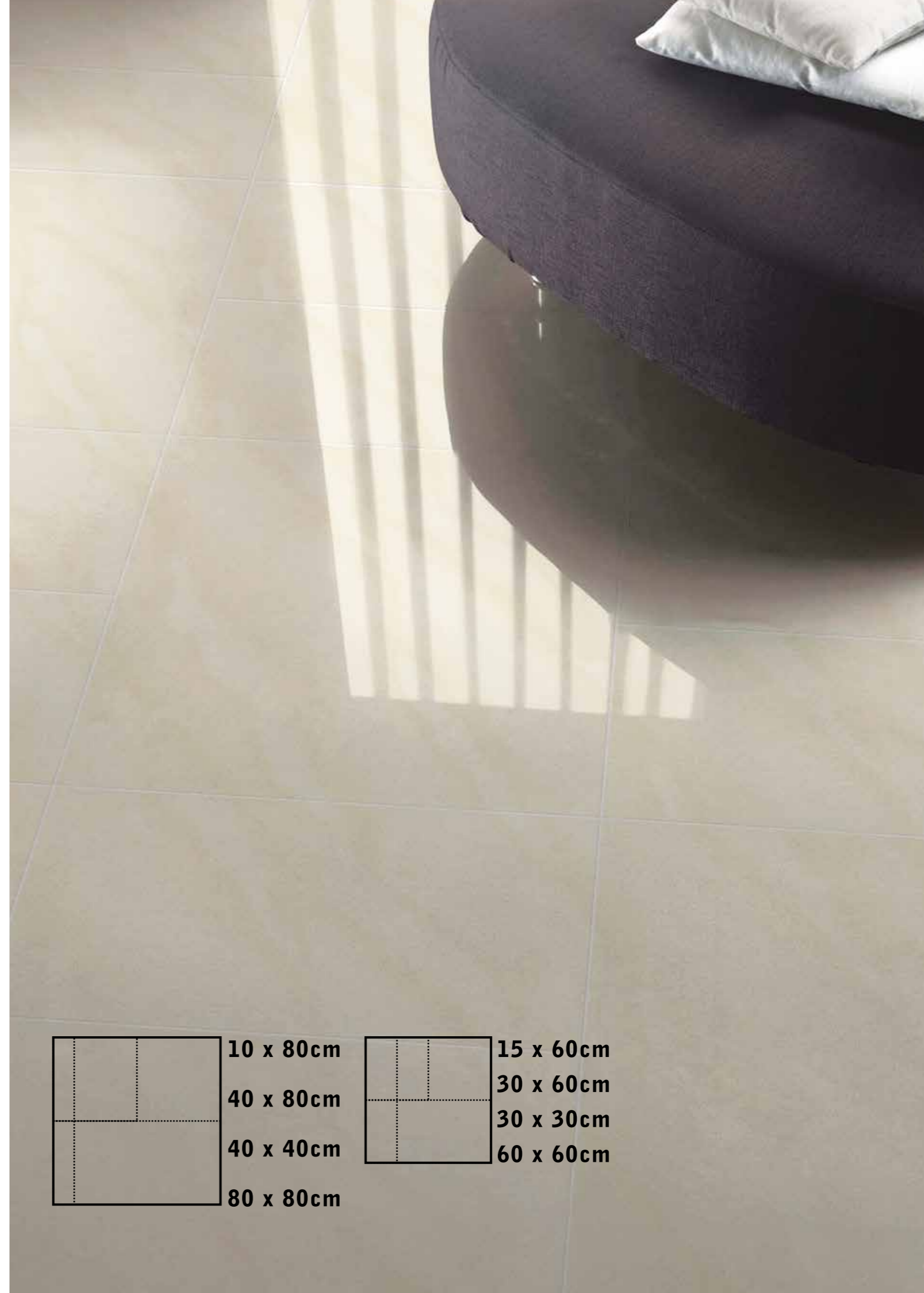
**VHP 88811 SG / VHP 66811 SG**  
80 x 80cm / 60 x 60cm  
statuario



**VHP 66815 SG**  
60 x 60cm  
toprak



**VHP 66816 SG**  
60 x 60cm  
sandstone

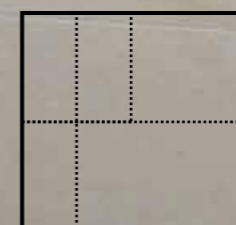


10 x 80cm

40 x 80cm

40 x 40cm

80 x 80cm



15 x 60cm

30 x 60cm

30 x 30cm

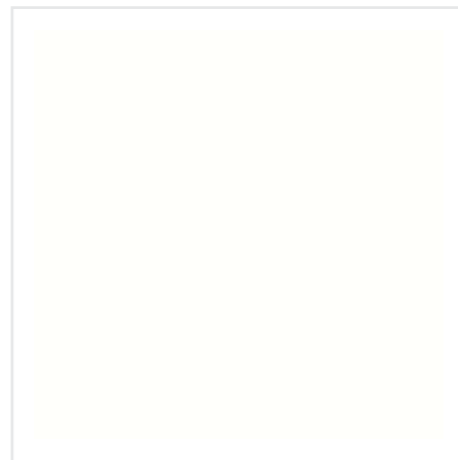
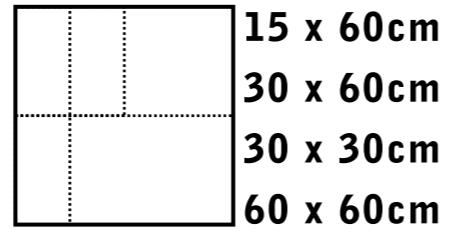
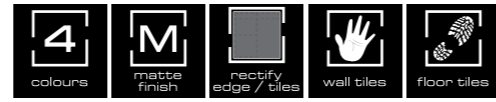
60 x 60cm



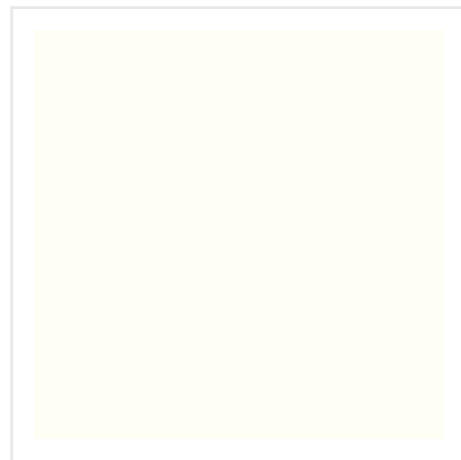
F  
U  
L  
L  
B  
O  
D  
D  
E  
D

# full bodied

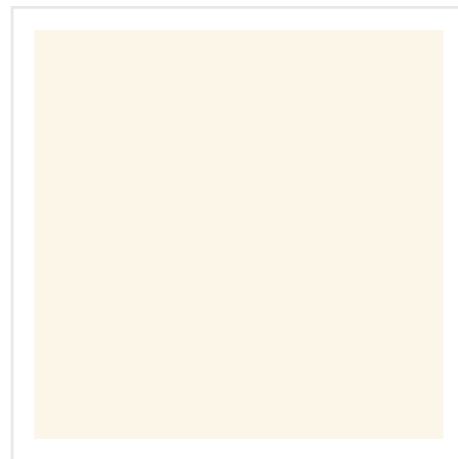
60 x 60cm



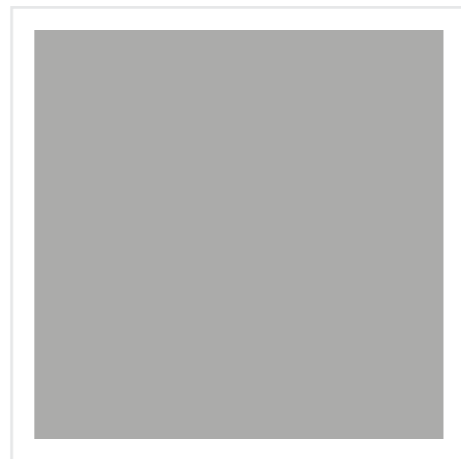
**VFM 6006-T**  
60 x 60cm  
full bodied



**VFM 66001-T**  
60 x 60cm  
full bodied



**VFM 66888-T**  
60 x 60cm  
full bodied



**VFM 66009-T**  
60 x 60cm  
full bodied

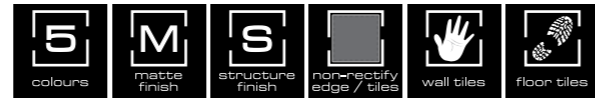




HOMOGNEOUS

# bamboo

30 x 60cm



**VHM 36016**  
30 x 60cm  
bamboo



**VHM 36017**  
30 x 60cm  
bamboo



**VHM 36019**  
30 x 60cm  
bamboo



**VHM 36020**  
30 x 60cm  
bamboo

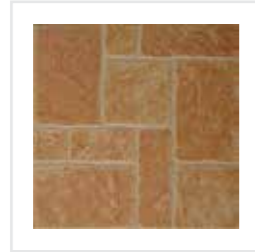
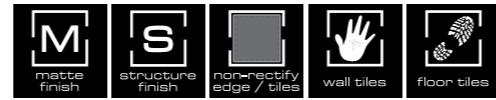


**VHM 36021**  
30 x 60cm  
bamboo



# homogeneous

## 30 x 30cm



**VHS 302-DYW**  
30 x 30cm  
302 slate



**VHS 302-LBN**  
30 x 30cm  
302 slate



**VHS 302-DBN**  
30 x 30cm  
302 slate



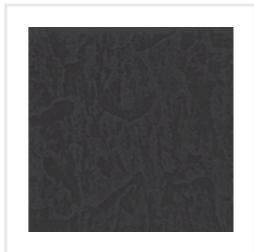
**VHS 302-DGN**  
30 x 30cm  
302 slate



**VHS 303-LBE**  
30 x 30cm  
303 slate



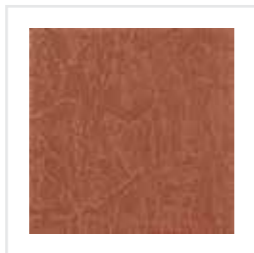
**VHS 303-DGN**  
30 x 30cm  
303 slate



**VHS 303-DBK**  
30 x 30cm  
303 slate



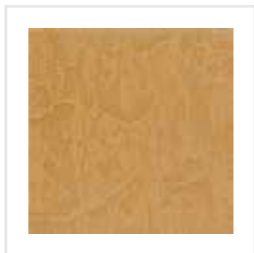
**VHS 303-LRB**  
30 x 30cm  
303 slate



**VHS 303-DRB**  
30 x 30cm  
303 slate



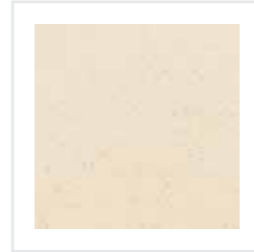
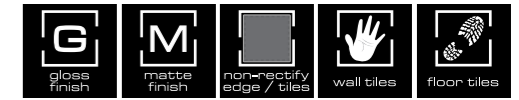
**VHS 303-LYW**  
30 x 30cm  
303 slate



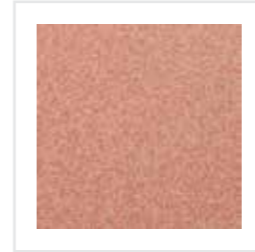
**VHS 303-DYW**  
30 x 30cm  
303 slate

# salt & pepper

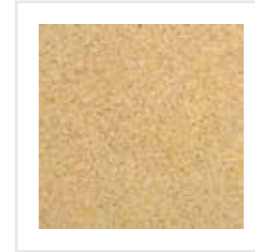
## 30 x 30cm



**VHG 300 WH /  
VHM 300 WH**  
30 x 30cm  
salt & pepper



**VHG 300 RB /  
VHM 300 RB**  
30 x 30cm  
salt & pepper



**VHG 300 DYW /  
VHM 300 DYW**  
30 x 30cm  
salt & pepper



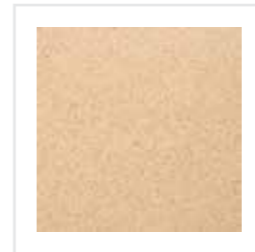
**VHG 300 GN /  
VHM 300 GN**  
30 x 30cm  
salt & pepper



**VHG 300 DBL /  
VHM 300 DBL**  
30 x 30cm  
salt & pepper



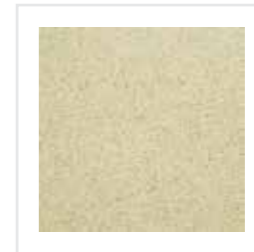
**VHG 300 BK /  
VHM 300 BK**  
30 x 30cm  
salt & pepper



**VHG 301 RB /  
VHM 301 RB**  
30 x 30cm  
salt & pepper



**VHG 301 YW /  
VHM 301 YW**  
30 x 30cm  
salt & pepper



**VHG 301 GN /  
VHM 301 GN**  
30 x 30cm  
salt & pepper





P  
O  
R  
C  
E  
L  
A  
I  
N



# cement

60 x 60cm



colours



matte finish



shade variation



rectify edge / tiles



wall tiles



floor tiles



**EDH 6025-T**  
60 x 60cm  
cement



**EDH 6026-T**  
60 x 60cm  
cement



**EDH 6027-T**  
60 x 60cm  
cement



**EDH 6028-T**  
60 x 60cm  
cement



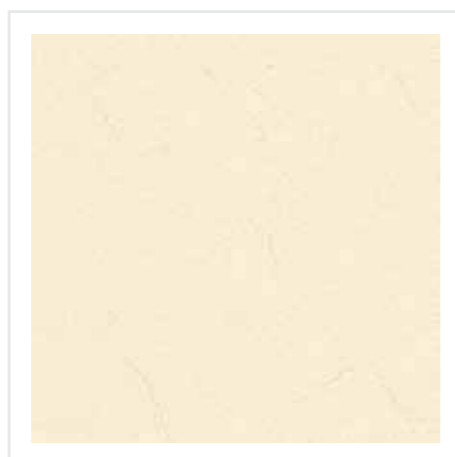
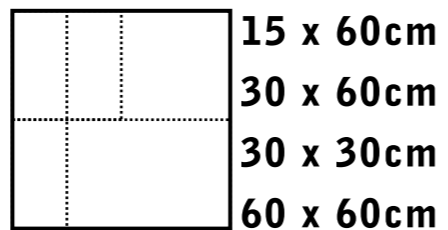
**EDH 6029-T**  
60 x 60cm  
cement



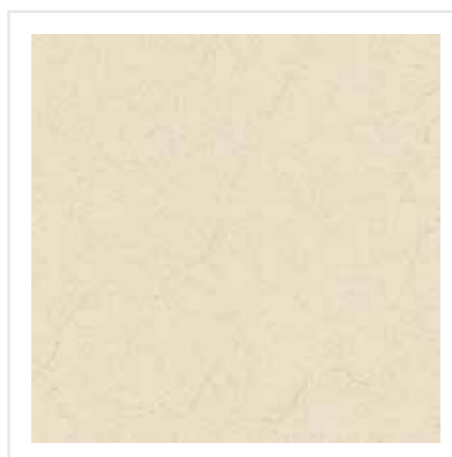
15 x 60cm  
30 x 60cm  
30 x 30cm  
60 x 60cm

# porcelain

60 x 60cm



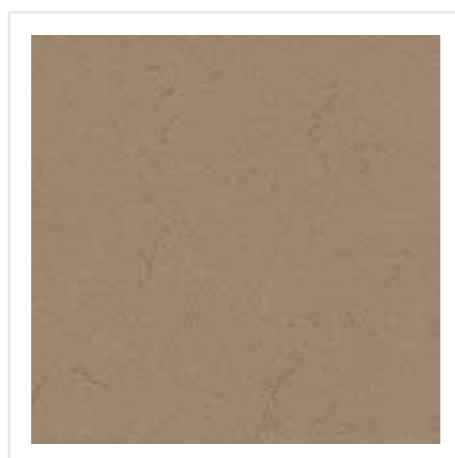
VHM 6017-T  
60 x 60cm  
porcelain



VHM 6018-T  
60 x 60cm  
porcelain



VHM 6019-T  
60 x 60cm  
porcelain



VHM 6020-T  
60 x 60cm  
porcelain

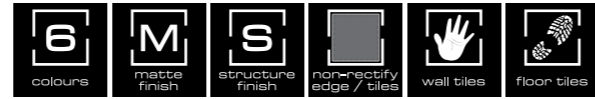


VHM 6021-T  
60 x 60cm  
porcelain



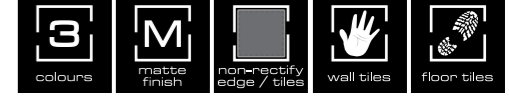
# meteor

30 x 60cm



# line

30 x 60cm



VPM 36010  
30 x 60cm  
meteor



VPM 36012  
30 x 60cm  
meteor



VPM 36013  
30 x 60cm  
meteor



VPM 36014  
30 x 60cm  
meteor



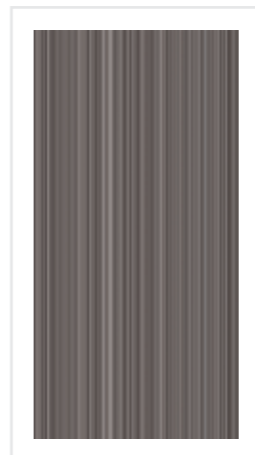
VPM 36015  
30 x 60cm  
meteor



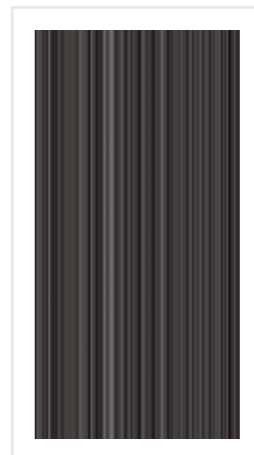
VPM 36035  
30 x 60cm  
meteor



VPM 36036  
30 x 60cm  
line

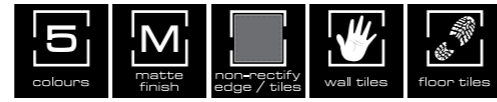


VPM 36037  
30 x 60cm  
line

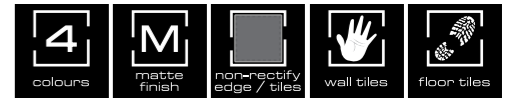


VPM 36038  
30 x 60cm  
line

**fashion**  
30 x 60cm



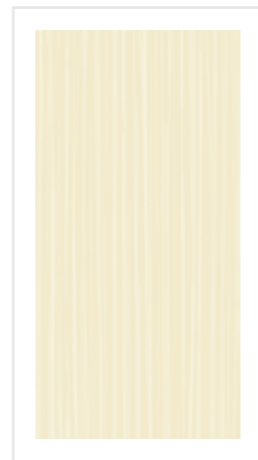
**wood**  
30 x 60cm



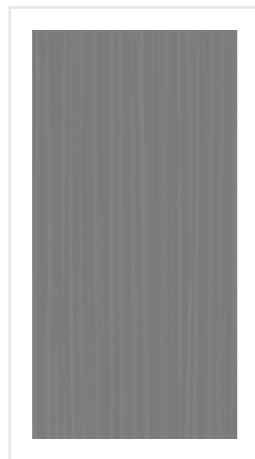
bringing new life  
to your home  
necessity | desire



VPM 36043  
30 x 60cm  
fashion



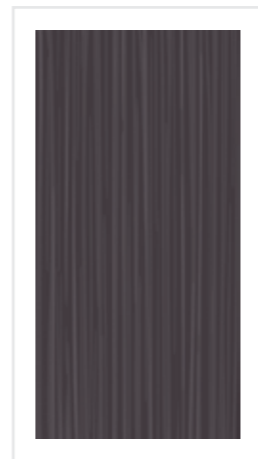
VPM 36044  
30 x 60cm  
fashion



VPM 36045  
30 x 60cm  
fashion



VPM 36046  
30 x 60cm  
fashion



VPM 36047  
30 x 60cm  
fashion



VPM 36048  
30 x 60cm  
wood



VPM 36049  
30 x 60cm  
wood



VPM 36050  
30 x 60cm  
wood



VPM 36051  
30 x 60cm  
wood

Preserved the best of tradition

- structuring
- smoothing
- traditional



**VPM 36081**  
30 x 60cm  
visual



**VPM 36082**  
30 x 60cm  
visual



**VPM 36083**  
30 x 60cm  
visual



**VPM 36084**  
30 x 60cm  
visual



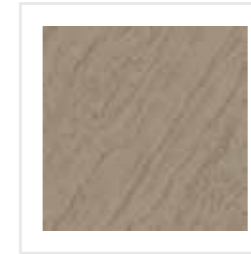
**VPM 36085**  
30 x 60cm  
visual



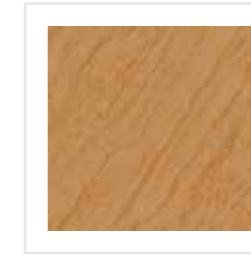
**VPM 321-MWH**  
30 x 30cm  
321



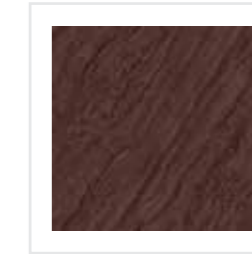
**VPM 322-MGY**  
30 x 30cm  
322 (structure)



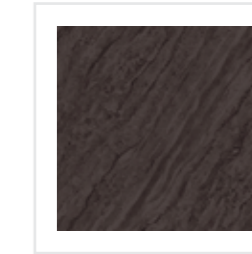
**VPM 322-MGN**  
30 x 30cm  
322 (structure)



**VPM 322-MBN**  
30 x 30cm  
322 (structure)



**VPM 322-MCF**  
30 x 30cm  
322 (structure)



**VPM 322-MBK**  
30 x 30cm  
322 (structure)



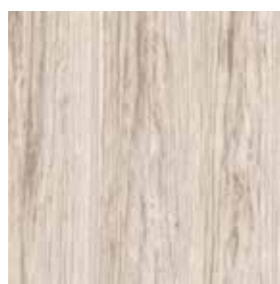


C  
E  
R  
A  
M  
I  
C

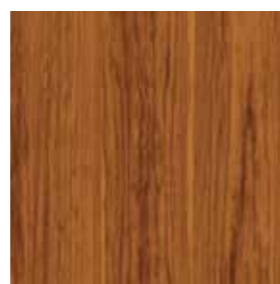


# digital printing

40 x 40cm



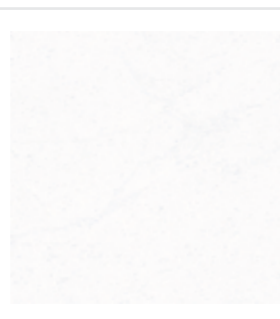
**DP 40177LCF**  
40 x 40cm  
digital printing 177



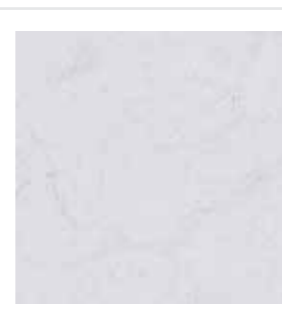
**DP 40177LBN**  
40 x 40cm  
digital printing 177



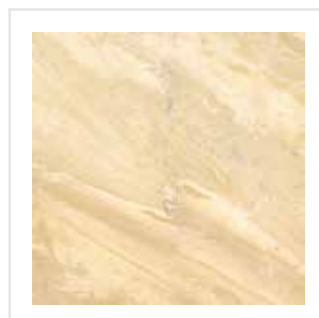
**DP 40181GGY**  
40 x 40cm  
digital printing 181



**DP 40182GWH**  
40 x 40cm  
digital printing 182



**DP 40182MGY (matte)**  
40 x 40cm  
digital printing 182



**DP 40185GYW**  
40 x 40cm  
digital printing 185



**DP 40185GBN**  
40 x 40cm  
digital printing 185



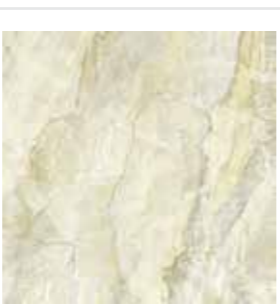
**DP 40185GCF**  
40 x 40cm  
digital printing 185



**DP 40185GGY**  
40 x 40cm  
digital printing 185



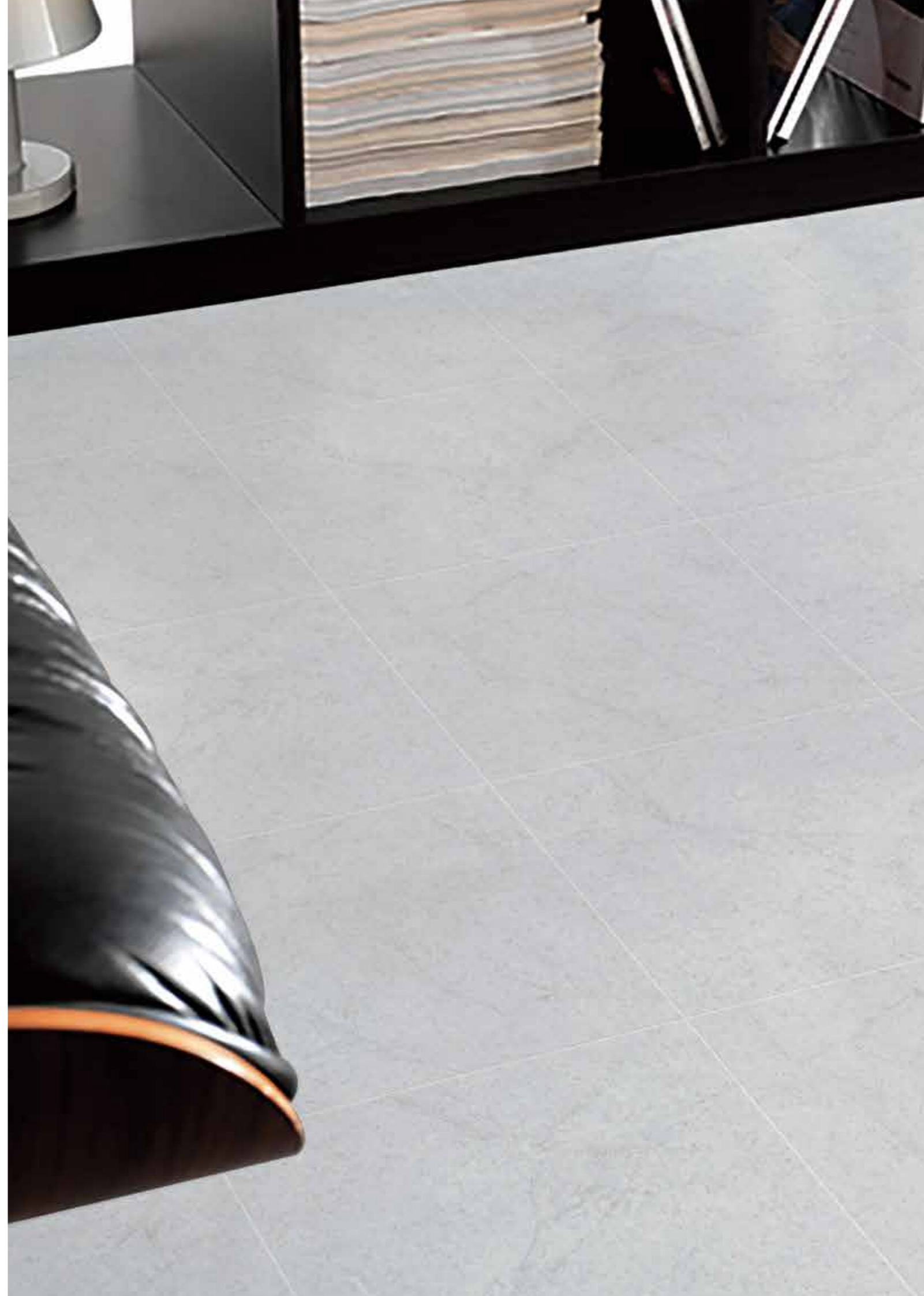
**DP 40186GBN**  
40 x 40cm  
digital printing 186



**DP 40186GGN**  
40 x 40cm  
digital printing 186



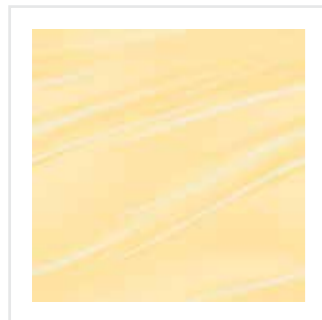
**DP 40186GGY**  
40 x 40cm  
digital printing 186





# ceramic

## 40 x 40cm



**40158-GYW**  
40 x 40cm  
ceramic 158



**40158-GBL**  
40 x 40cm  
ceramic 158



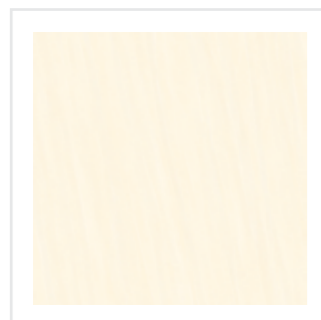
**40158-GGN**  
40 x 40cm  
ceramic 158



**40158-GBN**  
40 x 40cm  
ceramic 158



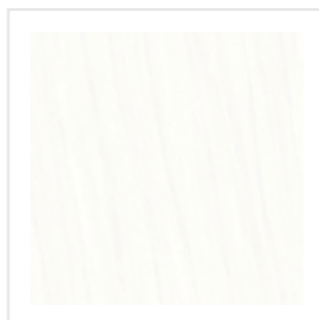
**40158-GGY**  
40 x 40cm  
ceramic 158



**40159GDYW**  
40 x 40cm  
ceramic 159



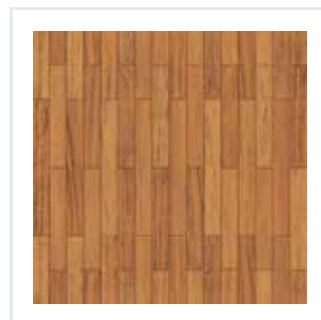
**40159MDYW (matte)**  
40 x 40cm  
ceramic 159



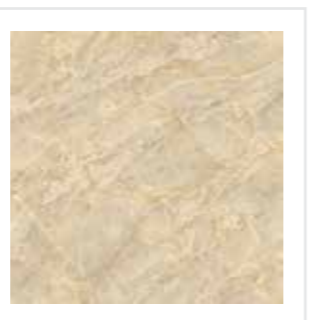
**40159GLGY**  
40 x 40cm  
ceramic 159



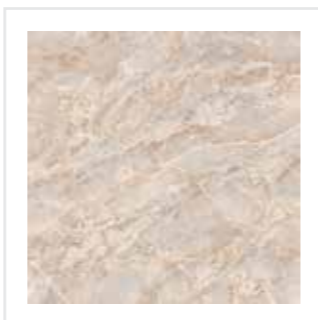
**40159MLGY (matte)**  
40 x 40cm  
ceramic 159



**40170-GBN**  
40 x 40cm  
ceramic 170



**40173-GYW**  
40 x 40cm  
ceramic 173

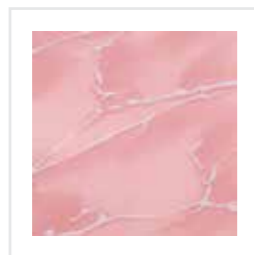


**40173-GBN**  
40 x 40cm  
ceramic 173



# ceramic

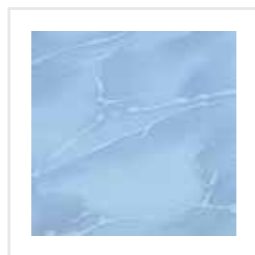
## 30 x 30cm



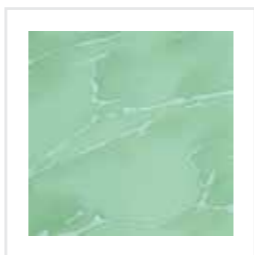
**3030113-DPK**  
30 x 30cm  
ceramic 113



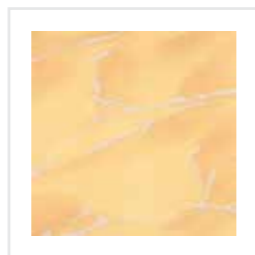
**3030113-DYW**  
30 x 30cm  
ceramic 113



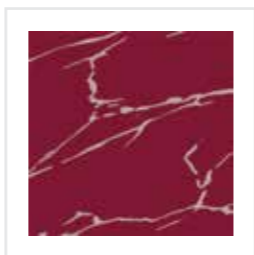
**3030113-DBL**  
30 x 30cm  
ceramic 113



**3030113-DGN**  
30 x 30cm  
ceramic 113



**3030113-DBN**  
30 x 30cm  
ceramic 113



**3030113-DMR**  
30 x 30cm  
marble 113



**3030145-GYW**  
30 x 30cm  
ceramic 145



**3030145-MYW**  
30 x 30cm  
ceramic 145 (matte)



**3030145-GGY**  
30 x 30cm  
ceramic 145



**3030145-MGY**  
30 x 30cm  
ceramic 145 (matte)



**3030151-MRB**  
30 x 30cm  
ceramic 151  
(structure, matte)



**3030151-MYW**  
30 x 30cm  
ceramic 151  
(structure, matte)



**3030151-MGN**  
30 x 30cm  
ceramic 151  
(structure, matte)



**3030151-MBK**  
30 x 30cm  
ceramic 151  
(structure, matte)



**3030154-MWH**  
30 x 30cm  
ceramic 154 (matte)



**3030154-MBE**  
30 x 30cm  
ceramic 154 (matte)



**3030154-MGY**  
30 x 30cm  
ceramic 154 (matte)



**3030154-MBK**  
30 x 30cm  
ceramic 154 (matte)



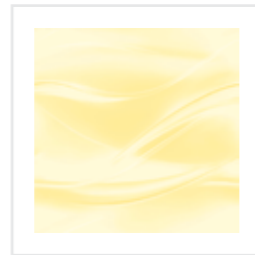
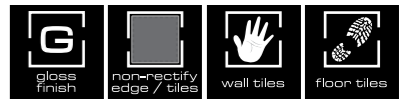
# 168

30 x 30cm, 40 x 40cm



# 169

30 x 30cm, 40 x 40cm



**3030168-GYW**  
30 x 30cm  
ceramic 168



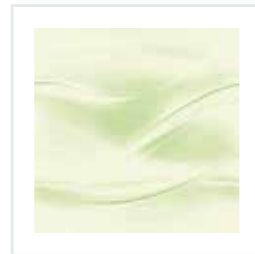
**40168-GYW**  
40 x 40cm  
ceramic 168



**3030168-GBL**  
30 x 30cm  
ceramic 168



**40168-GBL**  
40 x 40cm  
ceramic 168



**3030168-GGN**  
30 x 30cm  
ceramic 168



**40168-GGN**  
40 x 40cm  
ceramic 168



**3030169-GPK**  
30 x 30cm  
ceramic 169



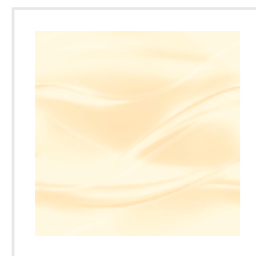
**3030169-GYW**  
30 x 30cm  
ceramic 169



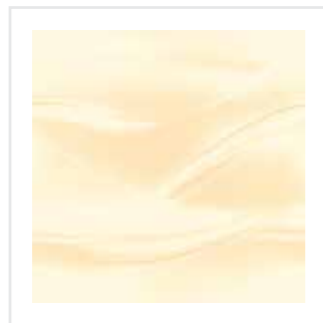
**3030169-GGN**  
30 x 30cm  
ceramic 169



**3030169-GGY**  
30 x 30cm  
ceramic 169



**3030168-GBN**  
30 x 30cm  
ceramic 168



**40168-GBN**  
40 x 40cm  
ceramic 168



**3030168-GGY**  
30 x 30cm  
ceramic 168



**40168-GGY**  
40 x 40cm  
ceramic 168



**40169-GYW**  
40 x 40cm  
ceramic 169



**40169-GGN**  
40 x 40cm  
ceramic 169



**40169-GGY**  
40 x 40cm  
ceramic 169

# ceramic

30 x 60cm



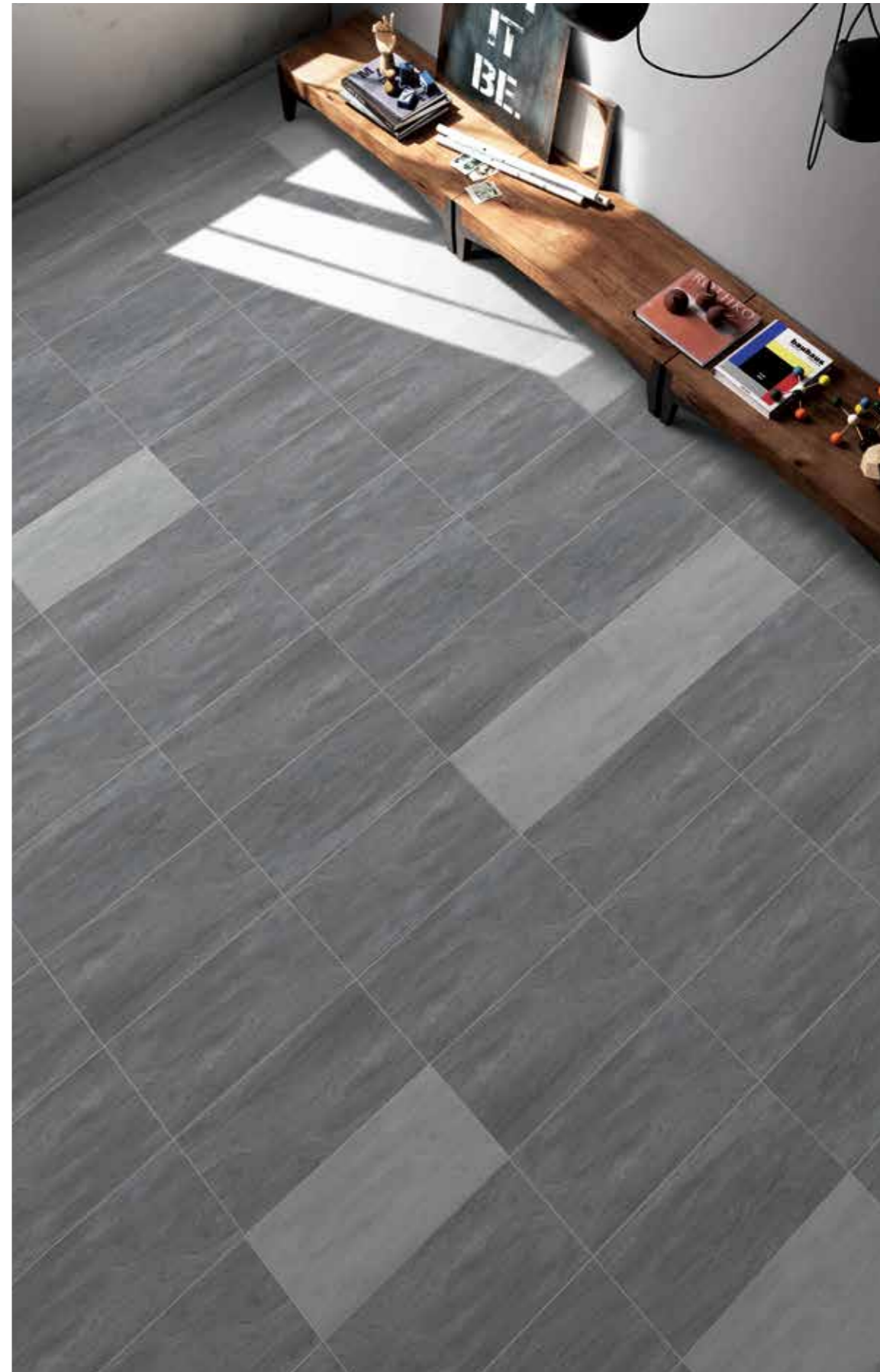
**VCM 36563**  
30 x 60cm  
ceramic



**VCM 36564**  
30 x 60cm  
ceramic

# ceramic

30 x 60cm



**VCM 36566**  
30 x 60cm  
ceramic



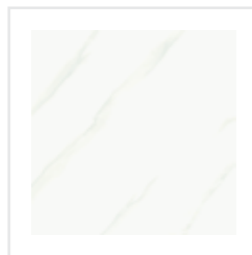
**VCM 36567**  
30 x 60cm  
ceramic



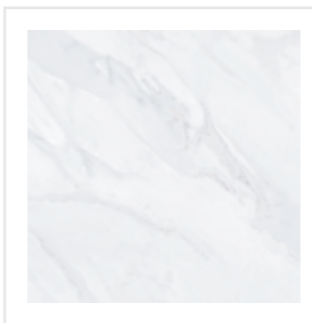
**VCM 36568**  
30 x 60cm  
ceramic

# carrara

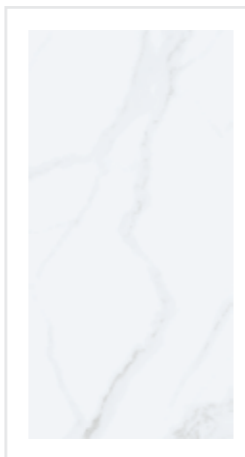
30 x 30cm, 30 x 60cm, 40 x 40cm



**3030184-GWH**  
30 x 30cm  
ceramic 184



**DP 40183GWH**  
40 x 40cm  
ceramic 183



**VCM 36569**  
30 x 60cm  
ceramic (matte)



# technical data

## Standard Packing & Weight

### Non-rectify Tile

Products		Homogeneous		Porcelain		Homogeneous & Full Bodied (rectify only)	Glazed Ceramic	
Size (mm)		300 x 300	300 x 600	300 x 300	300 x 600	300 x 600	300 x 300	400 x 400
Thickness (mm)		8.1 ± 0.2	8.6 ± 0.2	8.1 ± 0.2	8.6 ± 0.2	9.2 ± 0.2	7.5 ± 0.2	8.5 ± 0.2
Per Piece	m <sup>2</sup>	0.0900	0.1800	0.0900	0.1800	0.1800	0.0900	0.1600
	kg	1.59	3.20	1.59	3.20	3.42	1.25	2.82
Per Carton	pieces	16	8	16	8	8	18	9
	m <sup>2</sup>	1.44	1.44	1.44	1.44	1.44	1.62	1.44
	kg	25.44	25.60	25.44	25.60	27.36	22.50	25.38
	m <sup>3</sup>	0.0117	0.0134	0.0117	0.0134	0.0134	0.0122	0.0122
Per Pallet	cartons	72	72	72	72	72	72	56
	pieces	1152	576	1152	576	576	1296	504
	m <sup>2</sup>	103.68	103.68	103.68	103.68	103.68	116.64	80.64
	kg	1861.68	1873.20	1861.68	1873.20	1999.92	1650.00	1451.28
	m <sup>3</sup>	0.8398	0.9642	0.8398	0.9642	0.9642	0.8748	0.6854
	layers	3	3	3	3	3	3	2
Per Container	pallets	≈ 12	≈ 12	≈ 12	≈ 12	≈ 11	≈ 13	≈ 15
	pieces	13824	6336	13824	6336	6336	16848	7560
	m <sup>2</sup>	1244.16	1140.48	1244.16	1140.48	1140.48	1516.32	1209.60
	kg	22340.16	22478.40	22340.16	22478.40	21999.12	21450.00	21769.20
	m <sup>3</sup>	10.0777	10.6065	10.0777	10.6065	10.6065	11.3724	10.9227









\* Calculation based on 22 mt cargo weight, no. of pallets may varies in accordance with different ports requirement.  
\* kg per pallet, weight including pallet.

### Rectify Tile

Products		Nano Technology Polished Tile (60cm x 60cm and 80cm x 80cm base)						Full Bodied & Homogeneous & European Design (60cm x 60cm base)				
Size (mm)		100 x 600	300 x 300	300 x 600	600 x 600	400 x 800	800 x 800	100 x 600	150 x 600	300 x 300	300 x 600	600 x 600
Thickness (mm)		9.6 ± 0.2	9.6 ± 0.2	9.6 ± 0.2	9.6 ± 0.2	10.8 ± 0.2	10.8 ± 0.2	10.3 ± 0.2	10.3 ± 0.2	10.3 ± 0.2	10.3 ± 0.2	10.3 ± 0.2
Per Piece	m <sup>2</sup>	0.0600	0.0900	0.1800	0.3600	0.3200	0.6400	0.0600	0.0900	0.0900	0.1800	0.3600
	kg	1.30	1.95	3.90	7.80	8.00	16.00	1.15	1.95	1.74	3.47	6.95
Per Carton	pieces	15	14	6	4	4	2	15	15	14	6	4
	m <sup>2</sup>	0.90	1.26	1.08	1.44	1.28	1.28	0.90	1.35	1.26	1.08	1.44
	kg	19.50	27.30	23.40	31.20	32.00	32.00	17.25	29.25	24.36	20.82	27.80
	m <sup>3</sup>	0.0086	0.0121	0.0104	0.0138	0.0138	0.0138	0.0086	0.0130	0.0121	0.0104	0.0145
Per Pallet	cartons	40	48	56	40	32	40	40	40	48	56	40
	pieces	600	672	336	160	128	80	600	600	672	336	160
	m <sup>2</sup>	36.00	60.48	60.48	57.60	40.96	51.20	36.00	54.00	60.49	60.48	57.60
	kg	810.00	1340.40	1340.40	1278.00	1054.00	1310.00	720.00	1200.00	1199.28	1195.92	1142.00
	m <sup>3</sup>	0.3456	0.5806	0.5806	0.5530	0.4424	0.5530	0.3456	0.5184	0.5806	0.5806	0.5818
Per Container	layers	4	2	2	1	2	1	4	4	2	2	1
	pallets	≈ 28	≈ 17	≈ 17	≈ 17	≈ 21	≈ 17	≈ 31	≈ 19	≈ 20	≈ 19	≈ 20
	pieces	16800	11424	5712	2720	2688	1360	18600	12600	13440	6384	3200
	m <sup>2</sup>	1008.00	1028.16	1028.16	979.20	860.16	870.40	1116.00	1134.00	1209.60	1149.12	1152.00
	kg	22680.00	22786.80	22786.80	21726.00	22134.00	22270.00	22320.00	25200.00	23985.60	22722.48	22840.00
m <sup>3</sup>	9.6768	9.8703	9.8703	9.4003	9.2897	9.4003	10.7136	9.8496	11.6122	11.6316	11.6352	

\* Calculation based on 22 mt cargo weight, no. of pallets may varies in accordance with different ports requirement.  
\* kg per pallet, weight including pallet.

## Technical Specification

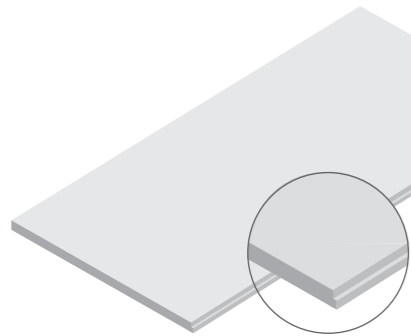
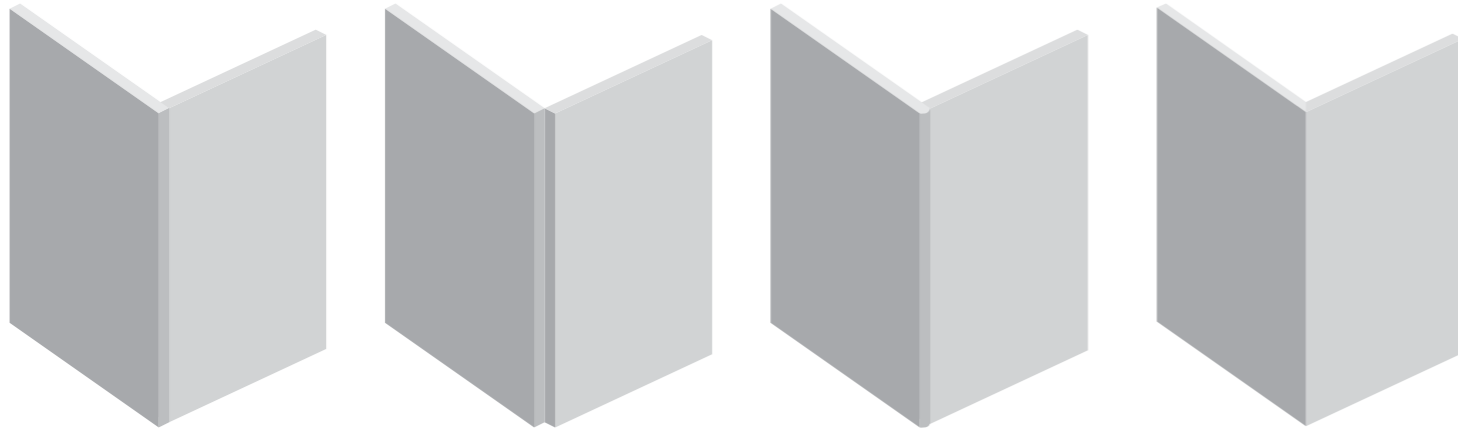
Type Of Test	MS ISO 13006:2003 Group BII <sub>2</sub> (Annex J)	MS ISO 13006:2003 Group BII <sub>1</sub> (Annex K)	MS ISO 13006:2003 Group BI <sub>1</sub> (Annex G), UGL (P & NP)	MS ISO 13006:2003 Group BI <sub>2</sub> (Annex H), GL
<b>Dimensions And Surface Quality</b>				
 Dimension - Length & Width <ul style="list-style-type: none"> <li>The deviation in % of the average size for each tile (2 or 4 sides) from the work size (W).</li> </ul>	± 0.6 %	± 0.6 %	± 0.6 %	± 0.6 %
	<ul style="list-style-type: none"> <li>The deviation in % of the average size for each tile (2 or 4 sides) from the work size of the 10 test specimens (20 to 40 sides).</li> </ul>	± 0.5 %	± 0.5 %	± 0.5 %
• Rectangularity		± 0.6 %	± 0.6 %	± 0.6 %
• Straightness Of Sides	± 0.5 %	± 0.5 %	± 0.5 %	± 0.5 %
• Thickness	± 5.0 %	± 5.0 %	± 5.0 %	± 5.0 %
• Surface Quality	A minimum of 95 % of the tiles shall be free from visible defects that would impair the appearance of a major area of tiles.			
	A minimum of 95 % of the tiles shall be free from visible defects that would impair the appearance of a major area of tiles.			
• Surface Flatness	- Centre Curvature	± 0.5 %	± 0.5 %	± 0.5 %
	- Edge Curvature	± 0.5 %	± 0.5 %	± 0.5 %
	- Warpage	± 0.5 %	± 0.5 %	± 0.5 %
<b>Physical Properties</b>				
 Modulus Of Rupture, in N/mm <sup>2</sup>	Minimum 22 N/mm <sup>2</sup> Individual minimum 20 N/mm <sup>2</sup>	Minimum 18 N/mm <sup>2</sup> Individual minimum 16 N/mm <sup>2</sup>	Minimum 35 N/mm <sup>2</sup> Individual minimum 32 N/mm <sup>2</sup>	Minimum 30 N/mm <sup>2</sup> Individual minimum 27 N/mm <sup>2</sup>
 Surface Abrasion	Report abrasion class and cycles passed	Report abrasion class and cycles passed	Maximum 175	Report abrasion class and cycles passed
 Cracking Resistance	Required	Required	-	Required
 Water Absorption (E)	3 % < E ≤ 6 % Individual maximum 6.50 %	6 % < E ≤ 10 % Individual maximum 11 %	≤ 0.5 % Individual maximum 0.6 %	0.5 % < E ≤ 3 % Individual maximum 3.3 %
 Breaking Strength, in N	- Thickness ≥ 7.5mm	Not less than 1000	Not less than 800	Not less than 1300
	- Thickness < 7.5mm	Not less than 600	Not less than 500	Not less than 700
<b>Chemical Properties</b>				
 Chemical Resistance <ul style="list-style-type: none"> <li>Resistance to low concentration of acids &amp; alkalis</li> <li>Resistance to high concentration of acids &amp; alkalis</li> <li>Resistance to household chemicals and swimming pool salts</li> </ul>	Manufacturer to state classification	Manufacturer to state classification	Manufacturer to state classification	Manufacturer to state classification
	Manufacturer to state classification	Manufacturer to state classification	-	Manufacturer to state classification
	Minimum GB	Minimum GB	Minimum UB	Minimum GB
 Stain Resistance	Minimum Class 3	Minimum Class 3	Minimum Class 3	Minimum Class 3

\* Note : The above generic VENUS Standards on tiles serve as a general guideline only. Different types of tiles are made to meet different performance requirements. For legal compliance or for specific technical performance please request a confirmation or report from the VENUS sales marketing teams or their agents.

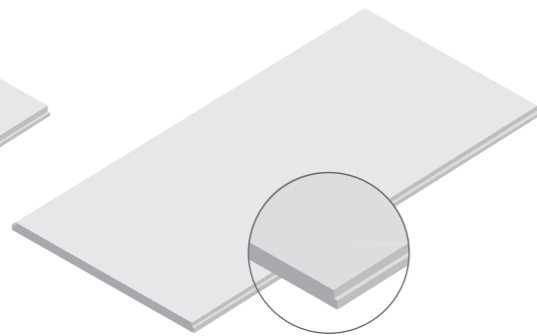
# technical data

## Value Add

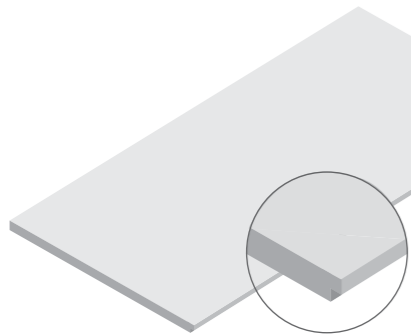
### • Corner



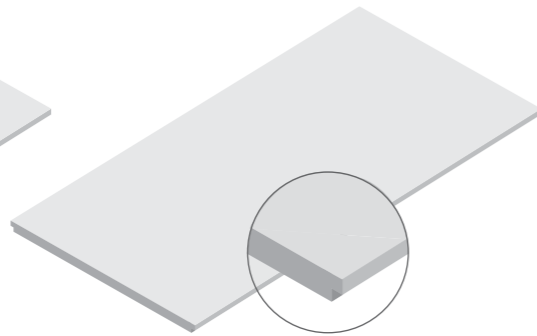
**Top 90° (Single Side)**



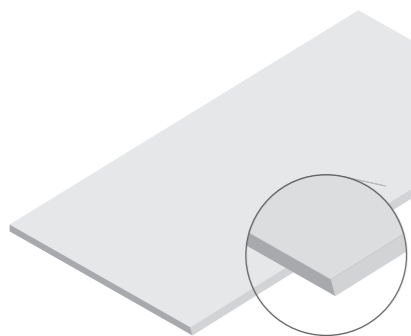
**Top 90° (Double Side)**



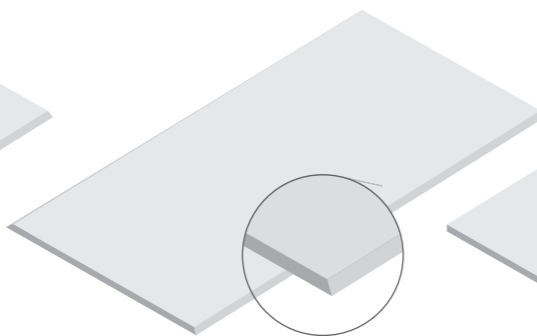
**Bottom 90° (Single Side)**



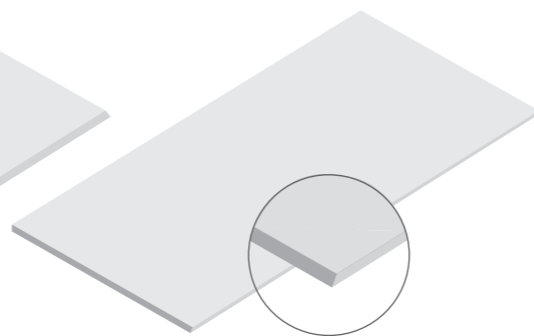
**Bottom 90° (Double Side)**



**Top 45° (Single Side)**

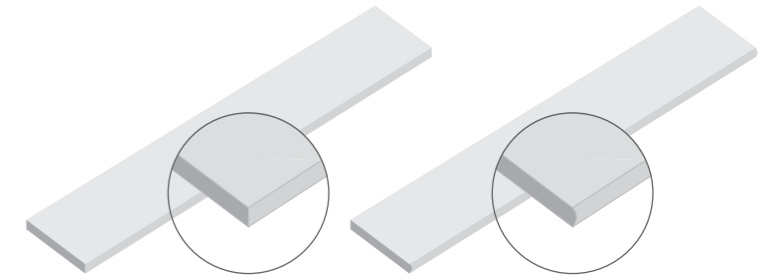
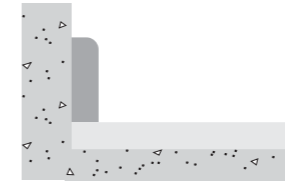
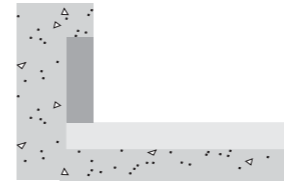


**Top 45° (Double Side)**

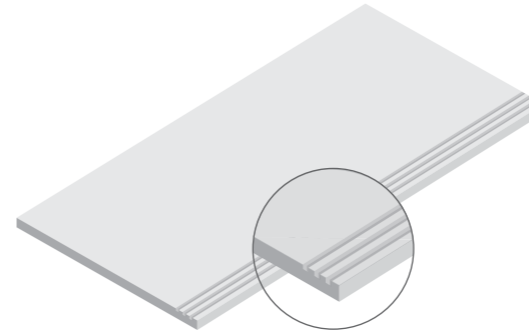


**Bottom 45° (Single Side)**

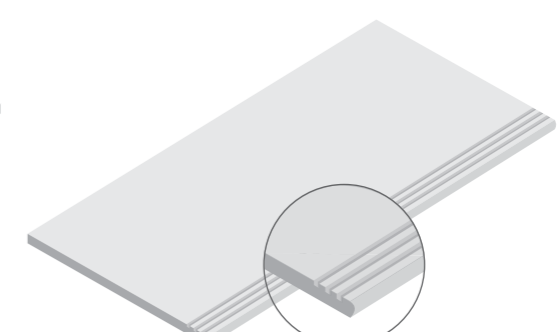
### • Skirting



### • Step Tread



**3 Lines**



**3 Lines**

### Symbolism



### Shade Variations



**(Low)**  
Differences among pieces from the same production run are minimal.



**(Medium)**  
Clearly distinguishable texture and / or patterns within the same colour code.



**(High)**  
While the colours present on a single piece of tile will be indicative of the colours to be expected on other tiles, the intensity of colours on each piece may vary significantly.



**(Random)**  
Random shades. The tiles within the same colour code may have totally different colours and shades compared to each other. Thus, the final installation will be unique.



Since the colour reproduction of this printed piece might vary slightly from the actual final tile colour, final selection should be made from sample tiles.  
Venus Ceramic Industry Sdn. Bhd. reserves the right to amend the colour range or specifications of tiles at any time and without notice.