

CONCEPT BATH BUILDING MATERIALS DMCC
CONCEPT BATH HAS ALL THAT YOU NEED



COMPANY PROFILE



**WE OFFER MORE
CREATIVE & EFFICIENT
SOLUTION MORE THAN
WHAT YOU CAN THINK**



TABLE OF CONTENTS

ABOUT OUR COMPANY	04
COMPANY OVERVIEW	05
- OUR VISION	05
- OUR MISSION	06
- OUR VALUE	07
OUR CERTIFICATES	08
LINE OF BUSINESS	12
OUR BRANDS	13
OUR PROJECTS	14
- IN UNITED ARAB EMIRATES	14
- IN SAUDI ARABIA	22



ABOUT OUR COMPANY

Water is the most important natural resource available to man kind today, and is rapidly becoming limited, which makes saving water critical to the future of our environment.

At **Concept Bath Building Materials DMCC**, we are totally dedicated to preserving water and believe in following sustainable water policies. Across the world saving water is becoming a major concern, not simply in the arid region of the planet, but elsewhere too.

Concept Bath Building Materials DMCC has been at the forefront of this key issue since 2003, having foreseen the problem with depleting water resources and has taken the lead in finding ways to cut water consumption.

The range of product both manufactured and distributed by **Concept Bath Building Materials DMCC**, offer full and perfect bath-room sanitary ware, shower rooms, steam and sauna rooms; normal and massage bathtubs as well as various stylish accessories to complete the perfect bath-room.

Concept Bath Building Materials DMCC is dedicated to continuous product development to bring products of the finest quality to its clients.

The research programs that are in place drive the products to not only meet but exceed international standards wherever possible. The testing processes are rigorous; on the raw material as well on the final products, and carried out regularly, to ensure product quality of the highest standard. All testing is done in house at the Group's quality control laboratories, all of which are fully equipped to implement test procedures in line with international standards.



COMPANY OVERVIEW

OUR VISION

Our vision is not only to conserve and protect the vital natural resource of fresh water through the use of our products, but also to help encourage and increase public awareness about water conservation.

Concept Bath Building Materials DMCC has adopted the Techno-Green Building drive to provide people with the fundamental knowledge of saving water techniques.



*In addition, as a member of the U.S Green council , **Concept Bath Building Materials DMCC** also meets the requirements of the (LEED) the leadership in energy and Environmental Design, Green Building rating System. **Concept Bath Building Materials DMCC** ha achieved its vision by working in collaboration with the world's best designers, architects, suppliers in intelligence components manufacturers, with 'TUV', 'NSF', WATERMARKS', 'ACS', 'WRAS', 'CSTB', 'KIWA', Quality Assurance and certificates. This combined with the high level of control, enables **Concept Bath Building Materials DMC** to continue to develop and release new concepts and collections for kitchen and bathroom of the future which, in turn help to conserve precious water resources.*





OUR MISSION



Concept Bath Building Materials DMCC has mission to redefine the bathroom as a comfortable, well design living space while achieving 40-60 percent of water saving compared to conventional building of the same size.

This mission is already well underway, with our valued clientele list including customers such as contracting companies, chain of international hotels, reliable and authorized distributors.

Our products have been installed in residential building, villas and apartments.

The strategic and convenient location of the company in Dubai 'Jebel Ali Free Zones enables **Concept Bath Building Materials DMCC** Dispatch products promptly to its main markets across the GCC, Middle East, North Africa, USA and Europe.

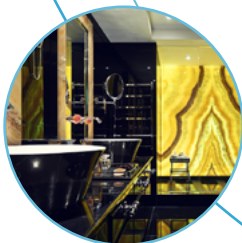
The location also offers **Concept Bath Building Materials DMCC** the opportunity to deliver outstanding aftersales service.





CUSTOMER SERVICES

Provision Of Service To Customers Before, During And After a Purchase Of Our Product.



INNOVATION

Research Develop And Custom Innovate Designs And Solutions To Satisfy Our Customers Needs.



TEAMWORK

Talen Win Games, But Teamwork and Intelligence Wins Championships.



INTEGRITY

There Are No Shortcuts To Success And There Is No Real Success Without Integrity.



PASSIONATE

Our Passion Goes Beyond Simply Offering Unique Products For The Bath. We Believe In Offering Our Customers Products With Personality That Improve People's Lives And Their Environment.

OUR VALUE



OUR CERTIFICATES

1

ISO 9001:2015

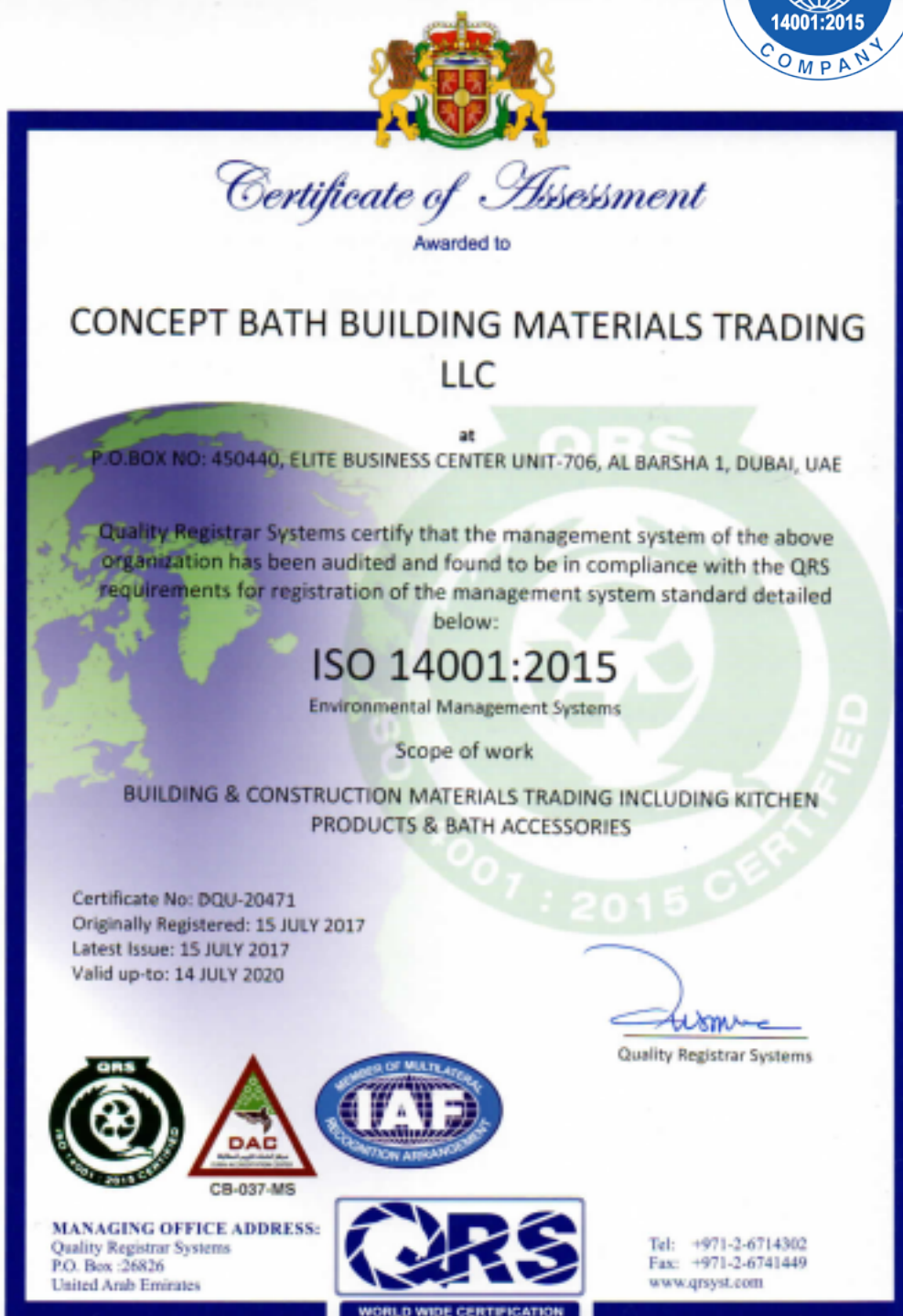


QUALITY MANAGEMENT SYSTEMS



2

ISO 14001:2015



ENVIRONMENTAL MANAGEMENT SYSTEMS



OUR CERTIFICATES

3

OHSAS 18001:2007



OCCUPATIONAL HEALTH AND SAFETY MANAGEMENT SYSTEMS



4

USGBC National Membership**Member ID: 2340044316023751****Member Since: July 24, 2008**

ABOUT USGBC (U.S. Green Building Council)

The U.S. Green Building Council (USGBC) is committed to transforming the way our buildings are designed, constructed and operated through LEED — the top third-party verification system for sustainable structures around the world. Every day USGBC is helping advance spaces that are better for the environment and healthier for us to live, work and play in. Through our community network, continuous collaboration with industry experts, market research publications and LEED professional credentials, USGBC remains a key driving force in the green building sector.



LINE OF BUSINESS



We Believe In Quality As The Chain Is Only As Strong As Its Weakest Link.It Is Important For The Manufacturing Process To Be Quality Controlled From The Smallest Screw Or Nut To Its Largest Body. Only Then You Can Be Sure That Your Structure Will Stand The Test Of Time.



OUR BRANDS

NIAGARA
USA
Bathroom Solutions &
Water Saving

ELITE
TURKISH SINKS

ELITE
LED
SOLUTIONS

ITALY
CORDIVARI
Heat Exchange

ELITE
Glass Shower
Doors / Rooms

CONCEPT **BATH**
Garbage & Linen
Chute Systems



UAE

ELITE JFUJI
ELEVATORS AND ESCALATORS

ITALY
ARISTON
WATER HEATERS

CANADA
frost
HYGIENIC SOLUTIONS AT WORK

STAINLESS STEEL PUBLIC
WASHROOM ACCESSORIES
ADA COMPLIANCE

merito
STP & Water Treatment
Technology



OUR BRAND INTRODUCTION

NIAGARA

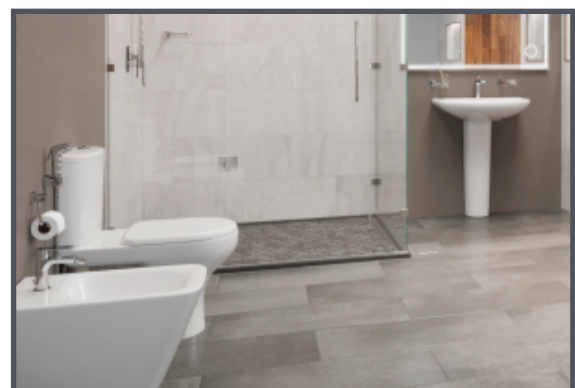
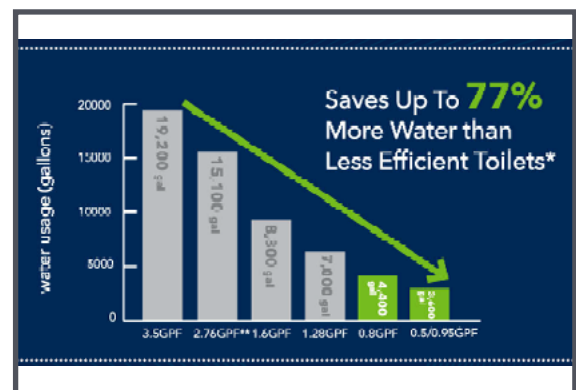
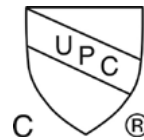
WE DIDN'T SET OUT TO SELL TOILETS.

We wanted to save the Earth. Now we do both!.

Niagara Conservation is a prime global source for energy and water conservation products and programs worldwide. Unlike our competitors, we are a vertical manufacturer that has grown our company and facilities to provide you the highest quality products with the best conservation technology available. The Niagara name has become synonymous with innovative conservation for a growing customer base of utility companies, government leaders, energy management officials, and eco/cost conscious homeowners and developers.

Today—as climate change, population growth, and record droughts present an unprecedented strain on our water supply—we are doubling down on our purpose and pushing our technology to invent new ways for our customers to conserve water without sacrificing performance.

The Niagara patented toilet line features revolutionary Stealth Technology, creating a high performance flush at 3.0 LPF. This means water bill savings without sacrificing performance and satisfaction.





ELITE SINKS

ELITE SANITARY WARE CO.,LTD . is a cooperated company between ELITE SANITARY WARE Industrial Co., Ltd in Hangzhou City, China and Elite Kitchen & Bath Products, Inc. in TURKEY for the manufacturing of high end showroom quality stainless steel sinks, faucets, shower drains and bath accessories. ELITE factory covers an area of 30,000 square meters is equipped with modern European machinery and used latest technology during the manufacturing process.

Inspired by the western traditional design philosophy, Elite has created its classic style of elegant simplicity and durability combining with modern elements to merge into daily life.

With 25+ years of experience in developing designs, manufacturing, wholesaling, and managing, Elite have been outstanding as a leading company offering the best quality products and services at a competitive rate.

Elite is the pioneer to get ISO9001 and UPC certified in the industry, and our products export to Europe, America, and East and South Asia.

Elite is a brand that embodies the spirit of our company: Delicacy, Astounding Workmanship, Exquisiteness, Innovation, and Everlasting Reliability. It represents our pride and confidence in serving our customers to the best of our ability.

The motto of Elite is to endeavor to perfect your life.





OUR BRAND INTRODUCTION

ELITE LED

Because LED technology is continuing to advance so rapidly you will find that more than 50% of the products in ELITE LED SOLUTIONS' catalogue are new.

In every category we are offering more choice, greater reliability and higher efficiency.

However, there are some particular products that we encourage you to consider.

COB LED downlights and CBD-NLD-119* series, for examples, are offering choice of aluminum bezel (L) or PC bezel, a range of colors for bezels to meet different requirements, and small size (S) especially designed for cabinet lighting.

COB LED track lights, Our new LED track light TLED332* P117 CRI 90°, close to the illuminated objects' natural color.

Track mounted, surface mounted and recessed version for your option, unique design for various installation.

High efficiency LED panels, for many years we have offered a wide range of LED panels, but we have now added new side-lit and back-lit panels to the range. These products both achieve 100 lumens/watt and are warranted for 30,000 hours.

If you are involved in exterior lighting, please check LED Exterior Lighting catalogue. It too is full of new, innovative and energy efficient new products.

In addition to being the largest lighting manufacturer in China, we are continuing to expand around the world.

We have subsidiaries in Europe and South America, branch offices in the Middle East and Australasia and exclusive distributors elsewhere in Asia and Africa.

Wherever you are, ELITE LED are there to provide you with professional lighting solutions.

ELITE LED are offering more than just lighting products they provide extensive professional lighting expertise, lighting design services and, of course, after-sales support.





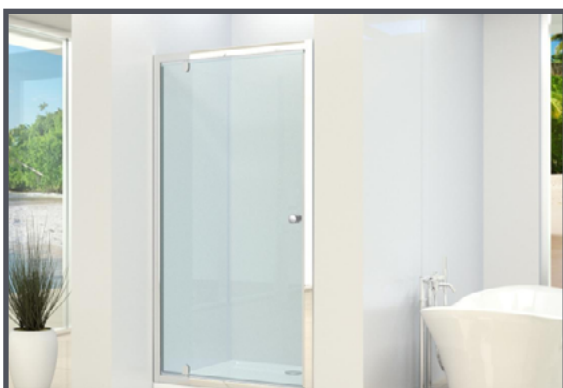
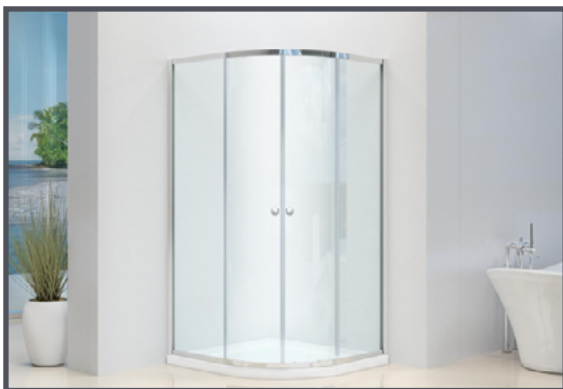
ELITE SHOWER GLASS

ELITE Showers Factory are the manufacturer of high end bathroom products which include Shower enclosure, Shower Cabin, Steam Cabin, Shower tray, Glass screen for Bathtub and so on.

ELITE Showers provides customers with quality products that strictly follow the international quality management system, offering the best quality ones at a competitive price along with the best services.

ELITE SHOWERS customers enjoy advanced selection of items, and the freedom to be creative and come up with new or unique products that we can help make reality out of them.

ELITE SHOWERS are manufacturing in China with service increment platform all the world.





OUR BRAND INTRODUCTION

CONCEPT BATH Garbage and Linen Chute system company

Was originally founded in 1981 by NEWTON Engineering.

After spotting a new opportunity they released their first system, an innovative advanced system were developed to meet the expanding market requirements for high technology system.

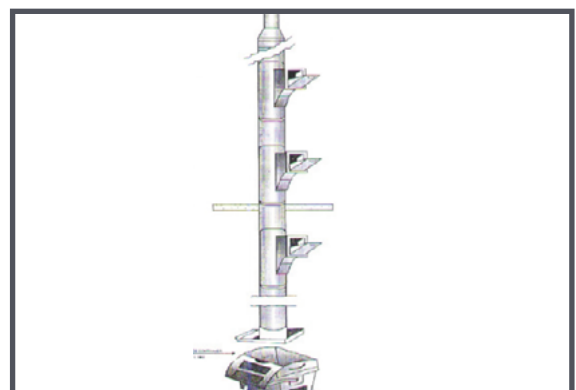
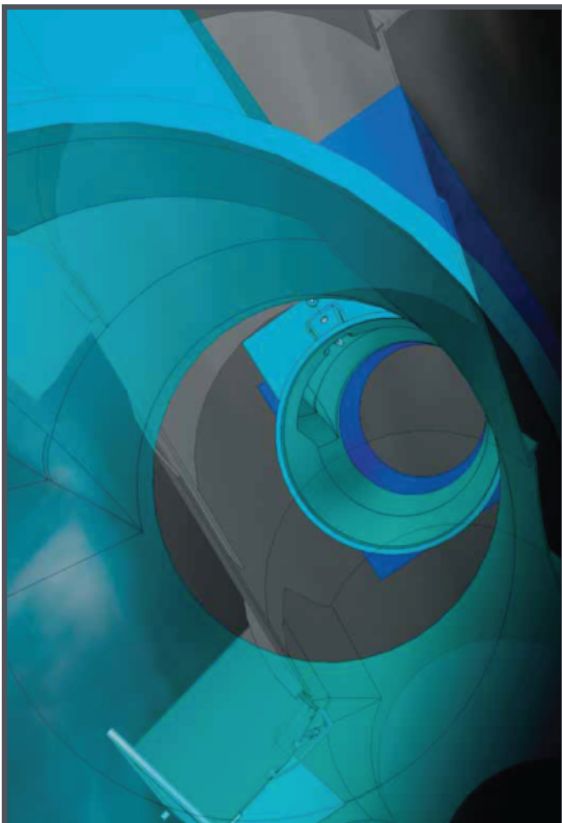
The system range was extended to include Garbage chute for high rise towers, Garbage chute specially designed for residential building and villas as well as special designed Linen Chute system for hospitals.

In 1989 they entered the Middle East market with the new NEWTON CONCEPT SYSTEM.

A base in UAE was established from which to manufacture, install and manage all after sales services to guarantee the system performance, efficiently.

NEWTON CONCEPT Systems company gained ISO 9001 certification, which it has maintained ever since.

Now, as the largest manufacturer of quality professional Chute systems NEWTON CONCEPT proudly looks back on more than 30 years of building robust, efficient and reliable factory, and looking forward to doing more for our clients in the future.





ELITE-JFUJI ELEVATORS

ELITE-JFUJI elevator with main components supplied by FUJI Japan and USA manufacturing base, are large-scale professional elevator manufacturer integrating R&D, production, sales, installation, repair, maintenance and transformation.

Hangzhou ELITE is the authorized overseas installation and after sales service provider.

The company covers an area of nearly 200000 sqm, the registered capital of USD 35 Millions, the building area of more than 70,000 square meters, built up to more than 70 meters of elevator test tower; The second phase of the project will build a research and development site of more than 40,000 square meters, with a landmark new test tower up to 168 meters high, which will become a medium-high test tower for elevator enterprises in south China.

As Foshan elevator industry association unit, China elevator association member unit, the company hand in hand at home and abroad wellknown large and medium-sized elevator parts formed close strategic cooperation union, and through the 24 hours service network covering the whole country and based on the cloud of ELITE-JFUJI intelligent elevator maintenance management service platform, focus on building to promote the healthy development of the industry and the environment harmony, global enterprise.

The advantages of ELITE JFUJI services can be considered the Maintenance service :

ELITE JFUJI provides Global Internet of monitoring center 24-hour real-time monitoring, including emergency maintenance, overhaul, technical support, annual inspection assistance and elevator and elevator internal renovation project, to ensure the smooth operation of elevator.

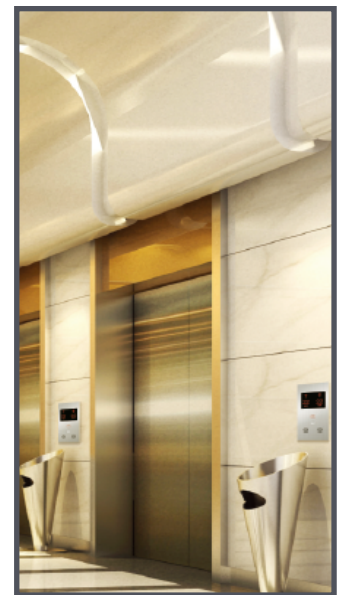
Elevators ranges are including:

Fire Elevator

Hospital Elevator

Passenger Elevator

Sight seeing Elevator



OUR BRAND INTRODUCTION

CORDIVARI ITALY.

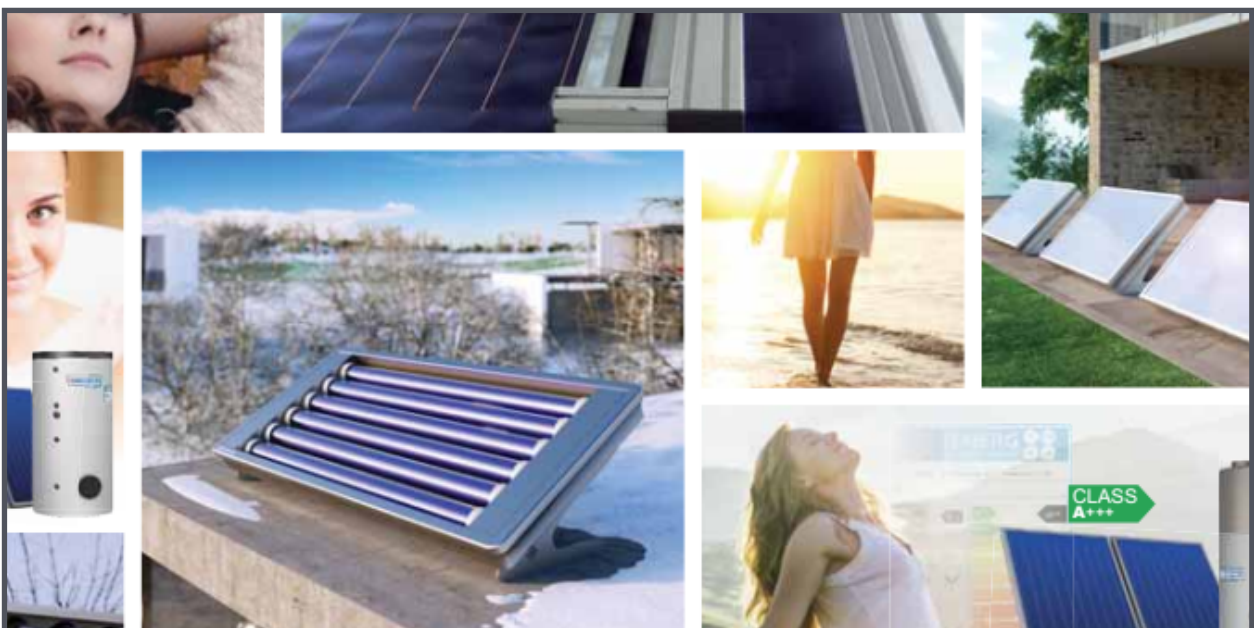
Cordivari company has a proven industrial tradition and is now one of the most important manufacturers in the heating and plumbing industry in Italy.

Founded in 1972 by Ercole Cordivari, the company is producing calorifiers, thermal storage and heating components, solar thermal systems, compressed air receivers, design radiators, chimney flues and food containers. Cordivari plants are situated on an area of 280.000 square meters and employ more than 450 employees.

Thanks to its development strategies, all addressed to the new technologies and to the training of new human resources, Cordivari is equipped with modern structures and advanced production processes. All the products are designed and produced in Italy and the technological, ergonomic and ecological choices allow to work respecting the human being and its environment. UNI EN ISO 14001:2015 environment managing systems and UNI EN ISO 9001 Quality system are perfectly integrated to grant and ensure company's main goals and values.

The highly qualified management, the constant research for innovative solutions and the extremely customer-oriented company policy stand for the leading market position and the exclusive know-how in the field of integrated heating systems that the Cordivari group has acquired.

All this is the result of a continuous commitment to achieving Customer Satisfaction.





ARISTON ITALY

An important result that confirms Ariston as leading brand in thermic comfort in the country and that is the result of a constant activity of information about the world of water heaters, conducted also through dedicated projects such as, for example, the creation of the cutting edge water heaters' technologies, how to save in using these products, and enjoy advanced design.





OUR BRAND INTRODUCTION

METITO STP & WATER TREATMENT TECHNOLOGY

The Design and Build arm of the Group specialises in custom design and manufacturing of water treatment, wastewater treatment and desalination plants/systems.

This division covers pre-engineered systems, regular plant turnkey design and build operations, supply of parts and plant operation and maintenance services.

Successfully executed over 3000 projects in worldwide locations.

Metito's tailor-made turnkey solutions for water and wastewater treatment plants are put to work through utilisation of five well-manned and equipped departments:

1- Project Management

Metito's project management strengths lie in the company's local presence and solid experience gained through long history of market presence. The project management team leads the communication between clients and associated internal departments (engineering, operations, installation and commissioning), ensuring every step is completed in-time and according to the clients' requirements.

2- Process Engineering and Design

Metito has excelled in utilising its knowhow to integrate various technologies to offer tailor-made water and wastewater treatment solutions that provide optimum designs, embracing all chemical, biological, mechanical and electrical elements.

3- Manufacturing Capabilities

Metito is one of the very few water specialised companies with an in-house manufacturing facility to ensure cost effective quality products for the clients.

4- Installation and Commissioning

Installation and commissioning team works in collaboration with process and design engineers to ensure compliance with client requirements. Metito's customer-focused approach, technical expertise and solid experience deliver such favorable results that on many occasions, clients extend the responsibility to include operation and maintenance phase.

5- Operation and Maintenance

Decades of smooth operations in some of the most challenging water and wastewater treatment plants and the knowhow to operate with different technologies have gained Metito a solid reputation in the market. Regardless of the scope of work, each project is looked at as a long-term partnership with the client and trouble-free output of the plant for many years to come is ensured.

Metito manufactures a wide range of high quality products for a broad spectrum of applications in water and wastewater treatment using the following technologies:

Membrane Separation (RO/ MF/UF/NF) Low Temperature Distillation (LTDis) Ion Exchange (Two Bed and Single Bed) Electro-Deionisation (EDI) Membrane Bioreactor (MBR) Biopipe...Wastewater Treatment System Sequencing Batch Reactor (SBR) Moving Bed Biofilm Reactor (MBBR) Turbo4Bio© Bioreactor Activated Sludge Wastewater Treatment Chlorination / Ozonation / Ultra-Violet (UV) Disinfection(MBR)





FROST CANADA

Frost Products Ltd. Turns 50!

In celebration of our 50th anniversary we would first like to thank our customers, employees and professional service providers. Your devoted support, hard work and sound advice has been vital in helping us reach this special milestone.

From our beginning in 1961, Frost has been committed to becoming a leading Canadian manufacturer of quality products. Our development of Sanitation and Architectural products has allowed us to work closely within the Health-care, Education, Food Service, Industrial and Institutional markets. Today the Frost Products brand is well recognized for quality and value in commercial markets throughout Canada, the United States, Mexico and abroad.

In recent years Frost has focused on the development and design of a wide range of hands free and environmentally friendly products.

Our theme of "Hygienic Solutions at Work" emphasizes our commitment to providing sanitation products that meet present day market demands and concerns.

Frost Products will continue to offer innovative hygienic product solutions, while delivering the quality we have built our reputations on.

We believe our first 50 years is just the beginning!





OUR PROJECTS

UNITED ARAB EMIRATES

MEYDAN 1500 VILLAS PROJECT

Mohammed bin Rashid City – District Eleven, a collection of 1,500 four bedroom semi-detached villas spanning a total of 450,000 square metres, will be let to Emirates Airline pilots.



Meydan 1500 Villas Project

CLIENT : Emirates Air Lines

CONTRACTOR : El-Seif

STATUS : Completed





MARRIOTT LA VILLE HOTEL & SUITES - CITY WALK DUBAI

The moment you walk in to our lobby, you'll be captivated by The iconic architecture and welcoming open spaces. Rooms, suites and furnished apartments feature warm décor and contemporary artistic flair. Marble bathrooms include a free-standing bath tub and a walk-in shower.



Marriott La Ville Hotel & Suites City Walk Dubai

CLIENT : Marriot

CONTRACTOR : Al Futtaim Carillion

STATUS : Completed



INTERCONTINENTAL DUBAI MARINA

Located amidst Dubai Marina and within 10 minutes walking distance from hot spots like Jumeirah Beach Walk, Dubai Marina Mall and a tram station, InterContinental® Dubai Marina is the place to see and be seen. Natural light fills artfully designed interiors revealing a collection of contemporary sculptures. A Michelin-starred chef and expert sommeliers attract discerning diners to our restaurants and bars. Featuring its own Health Club, Spa and outdoor pool, the hotel is a destination in itself.

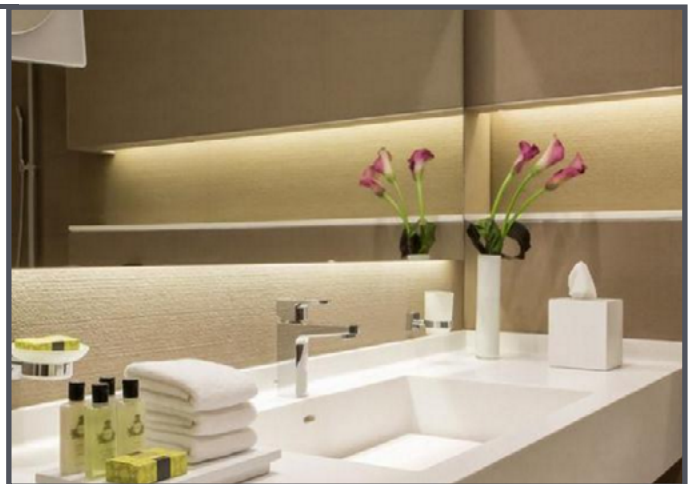


Intercontinental Dubai Marina

CLIENT : Select Properties

CONTRACTOR : GCC

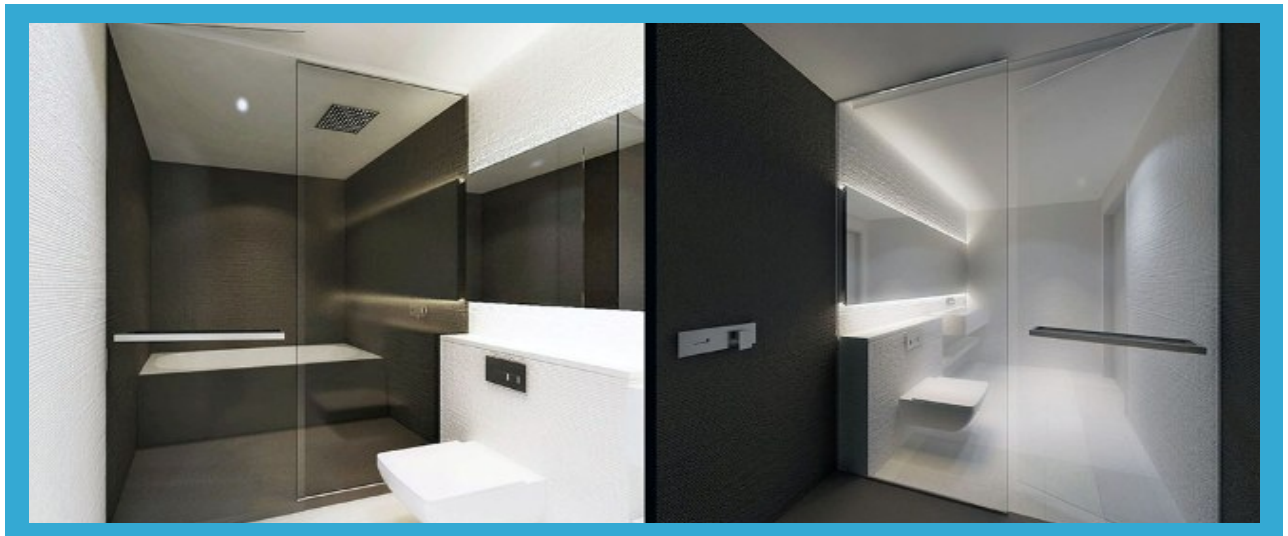
STATUS : Completed





WEST AVENUE DUBAI MARINA

Taking its inspiration from the commercial, aesthetic and architectural elements of New York, the development brings the artistic mastery of early 20th century Manhattan-style architecture to new Dubai. Sleek contours and floor-to-ceiling glass shape its spectacular facade. The development comprises 276 luxury units, including studios, one, two and three bedroom apartments and fabulous penthouses.



West Avenue Dubai Marina

CLIENT : Select Properties

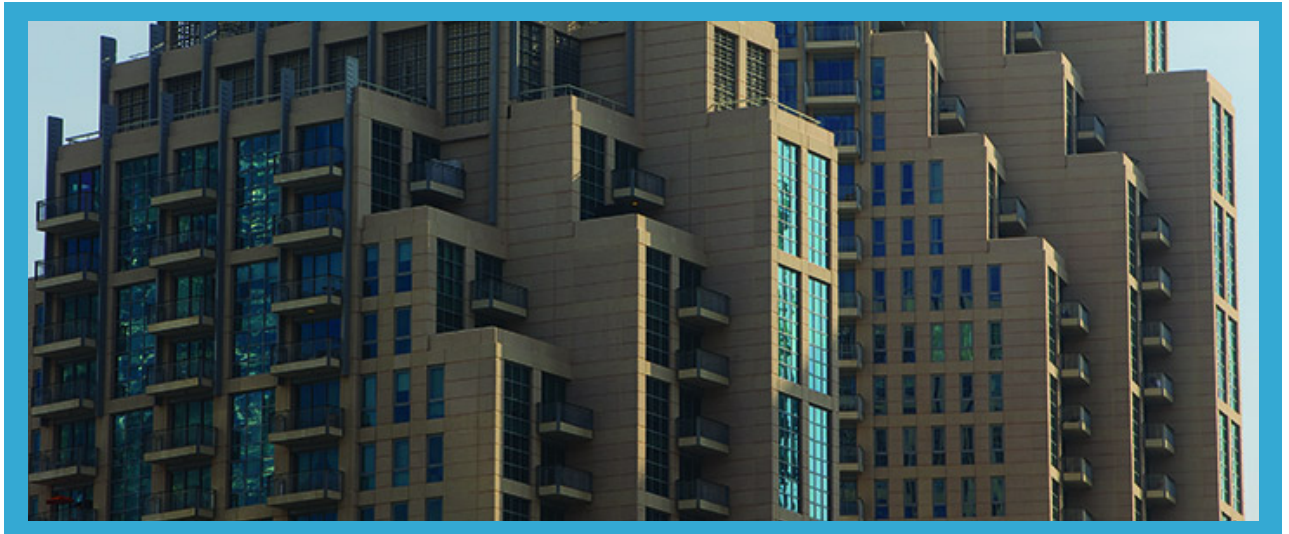
CONTRACTOR : CRC

STATUS : Completed



STANDPOINT TOWERS DOWNTOWN

Offering a surplus of design perspective, Standpoint fuses contemporary exteriors with classic interiors located on Mohammed Bin Rashid Boulevard, a bustling thoroughfare lined with retail outlets and vibrant cafes, the twin Standpoint towers are situated in close proximity to Burj Khalifa, the world's tallest building. Designed by international architects Smallwood, Reynolds, Stewart and Stewart, Standpoint features studios, one, two, and three-bedroom apartments with a wide range of amenities on its podium level. Standpoint provides residents easy access to the varied lifestyle offerings in Downtown Dubai, including The Dubai Mall and Souk Al Bahar, as well as the world-class hotels.



Standpoint Towers Downtown

CLIENT : Emaar Properties

CONTRACTOR : ARABTEC

STATUS : Completed

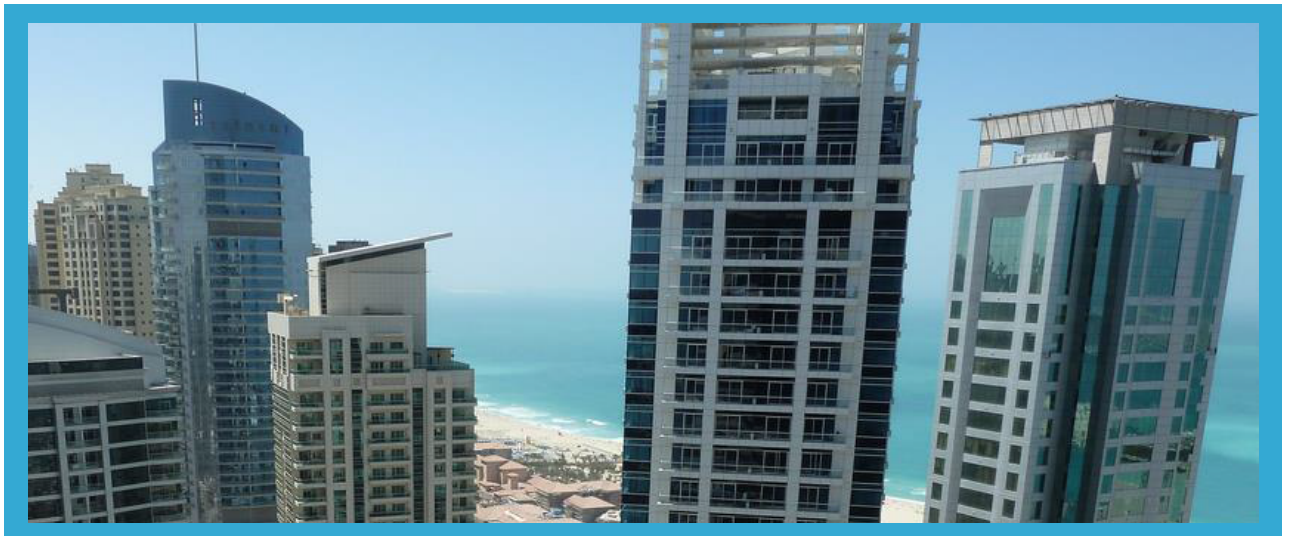




BOTANICA TOWER DUBAI MARINA

Waterfront Living In a Unique Development

Home to a tranquil oasis in the heart of the city, Botanica is a development like no other. It commands an excellent location between three five-star hotels and Dubai Marina. A striking residential tower comprising the finest apartments, villas and penthouses. And on the 27th floor lies a Dubai first – a tropical botanical sky garden. The only private residence in the city that lets tenants take in the breath-taking Dubai skyline with such serenity.



Botanica Tower Dubai Marina

CLIENT : Dubai Select

CONTRACTOR : GCC

STATUS : Completed



CITY TOWERS AJMAN DOWNTOWN



City Towers Ajman Downtown

CLIENT : Ajman Rural Office

CONTRACTOR : Canadian Cons.

STATUS : Completed





AL RAHA BEACH DEVELOPMENT- ABU DHABI



Al Raha Beach Development- Abu Dhabi

CLIENT : Al Dar

CONTRACTOR : AFC

STATUS : Completed



OUR PROJECTS

SAUDI ARABIA

KING ABDULAZIZ UNIVERSITY



King Abdulaziz University

CLIENT : King Abdulaziz University

CONTRACTOR : Al Arrab Contracting

STATUS : Completed





PRINSESS NOURA UNIVERSITY



Princess Noura University

CLIENT : Princess Noura University

CONTRACTOR : Zahran For Maintainance and Operations

STATUS : Completed





36,000 RESTROOM FACILITIES IN AL MASHAER AL MUQDASA



36,000 Restroom Facilities in Al Mashaer Al Muqdas

END USER: Ministry Of Municipality &
Rural Affairs

CONTRACTOR : Alawi Tunsi Contracting Est.

STATUS : Completed



ARAMCO HOUSING PROJECT IN HAWIYAH, HOFUF



ARAMCO Housing Project in Hawiyah, Hofuf

END USER : Saudi ARAMCO

CONTRACTOR : Al-Tamimi & Al-Mazrou Co.

STATUS : Completed

**KING KHALID SPORTS CITY - ABHA**

End User: Ministry Of Interior

Contractor: Al rashid Contracting Co.

KING ABDUL-AZIZ UNIVERSITY

End User: Ministry of Higher Education

Contractor: Al-Arrab Contracting Co.

AL KHARAJ HOSPITAL - 200 BEDS

End User: Ministry Of Health

Contractor: Al Majal Al Arabi Company - Dulb

KAP2A

End User: Ministry Of Interior

Contractor: Al Seif Engineering Co.

NAJРАН HOSPITAL - 200 BEDS

End User: Ministry Of Health

Contractor: Al Majal Al Arabi Company - Dulb

HAIL HOSPITAL - 500 BEDS

End User: Ministry Of Health

Contractor: : Al Majal Al Arabi Company - Dulb

HOUSING - MINISTRY OF HOUSING

End User: Ministry Of Housing

Contractor: Al Hokair Company

TABUK HOSPITAL - 200 BEDS

End User: Ministry Of Health

Contractor: Al Majal Al Arabi Company - Dulb

HOUSING - MINISTRY OF HOUSING

End User: Ministry Of Housing

Contractor: Zahrat al Sahra Company

MADINAH MUNAWARA HOSPITAL

Project: End User: Ministry Of Housing

Contractor: Al Jabirien Company

HOUSING - MINISTRY OF HOUSING

End User: Ministry Of Housing

Contractor: Al Babbain Company

SALINE WATER CONVERSION CORPORATION HOUSING PROJECT

End User: Saline Water Corporation for Charity Housing

Contractor: Al-Fawzani & Partners Contracting Co.

MOTOR HOME 4, AL-AMMARIYAH FARMS, JARIR BOOKSTORE

End User: Kite Arabia Ltd. for Charity Housing

Contractor: Kite Arabia Ltd. Contracting Co.

MINISTRY OF INTERIOR KING ABDULLAH PROJECT "KAP 02"

End User: Ministry of Interior

Contractor: El-Seif Engineering Contracting Co.

ARMED FORCES HOUSING PROJECT IN JAZAN MILITARY CITY

End User: Ministry of Defense

Contractor: Al-Jouda Construction Co.

MINISTRY OF INTERIOR KING ABDULLAH PROJECT "KAP 04"

End User: Ministry of Interior

Contractor: Al-Rashid Trading & Contracting Co.



MINISTRY OF WATER & ELECTRICITY MUNICIPALITIES RETROFITTING

End User: Ministry Of Water & Electricity Municipalities
Contractor: Ministry Of Water & Electricity Municipalities

SAUDI ARABIAN NATIONAL GUARD HOUSING PROJECT

End User: Ministry of National Guard
Contractor: Saudi Binladin Group (ABCD)

HOUSING - MINISTRY OF HOUSING

End User: Ministry Of Housing
Contractor: Al Kheriji Company

MINISTRY OF DEFENSE HOUSING PROJECT IN RIYADH

End User: Ministry of Defense
Contractor: Al-Yamama Contracting Co.

HOUSING - MINISTRY OF HOUSING

End User: Ministry Of Housing
Contractor: Al Joudah Company

MINISTRY OF INTERIOR PROJECT "SPUF"

End User: Ministry of Interior
Contractor: Saudi OGER Ltd.

NATIONAL GUARDS FAMILY HOUSING

Project: End User: SANG
Contractor: Safana United Company

KING ABDULLAH PROJECT "KAP 04"

End User: Ministry Of Interior
End User: Al-Arrab Contracting Co.

MINISTRY OF WATER & ELECTRICITY ORDERS

End User: Ministry Of Water & Electricity
Contractor: Ministry Of Water & Electricity

48 SCHOOLS PROJECT

Project: End User: Ministry Of Education
Contractor: Beijing Emirates International Construction Co

SAUDI ARABIAN NATIONAL GUARD HOUSING PROJECT

End User: Ministry of National Guard
Contractor: Saudi OGER Ltd.

71223 - GCC STANDARDIZATION ORGANIZATION (GSO)

End User: Ministry of Finance
Contractor: Samama Contracting Company

WORKERS HOUSING COMPLEX, JEDDAH INDUSTRIAL AREA

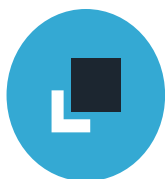
End User: Saudi Industrial Property Authority
Contractor: Al Rajhi Saudi constructions Group

JAZAN IMMIGRANT HOUSING PROJECT

End User: King Abdullah Foundation for Charity Housing
Contractor: Al-Rashid Trading & Contracting Co.

AL-MAJMAA HOUSING PROJECT

End User: Ministry Of Housing
Contractor: Jawdat Contracting Co.



**CONCEPT BATH BUILDING
MATERIALS DMCC**

CONCEPT BATH HAS ALL THAT YOU NEED



WEBSITE:
WWW.CONCEPTBATH.COM



TELEPHONE:
+971 04 876 8416



EMAIL:
INFO@CONCEPT-BATH.COM